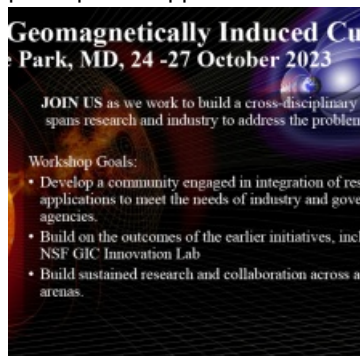


Daniel  
Welling  
University of Michigan  
Bang Nguyen (NREL)  
Hannah Parry (U. Alberta)  
Liyang Qian (NCAR)  
Surja Sharma (U. Maryland)  
Poster

End-to-end research and research-to-operations efforts on the issue of geomagnetically induced currents (GICs), from space weather physics to power grid impacts, is fraught with unique challenges. It requires a wide range of experts to come together using a common language to communicate needs, capabilities, and next steps. Currently, major obstacles exist preventing progress in this field. No community exists to bring together all GIC-relevant disciplines on a consistent basis. Talent and knowledge pipelines that should bridge communities over the long term are either “leaky” (high workforce attrition rate) or non-existent.

In this poster, we introduce a new community dedicated to advancing interdisciplinary GIC research and collaboration. Our long term mission is to Integrate the effort and resources of all relevant disciplines to build talent & knowledge pipelines and develop sustained support mechanisms for combined GIC research and mitigation efforts. An inaugural workshop will be held this fall with the goal of developing a true GIC-dedicated community. We invite those interested to discuss participation opportunities.



Poster PDF

[Welling-D-Thursday.pdf](#)

Poster category

Geospace/Magnetosphere Research and Applications

Meeting homepage

[Space Weather Workshop 2023](#)

[Download to PDF](#)