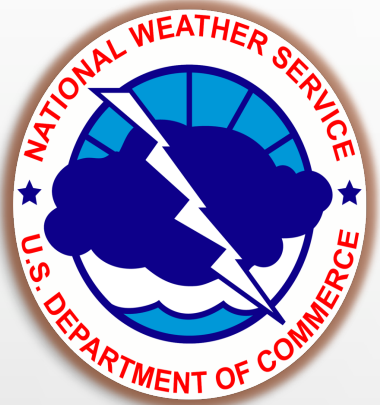


SE DEWS MEETING

ENSEMBLE FORECASTING

ESP TO HEFS....



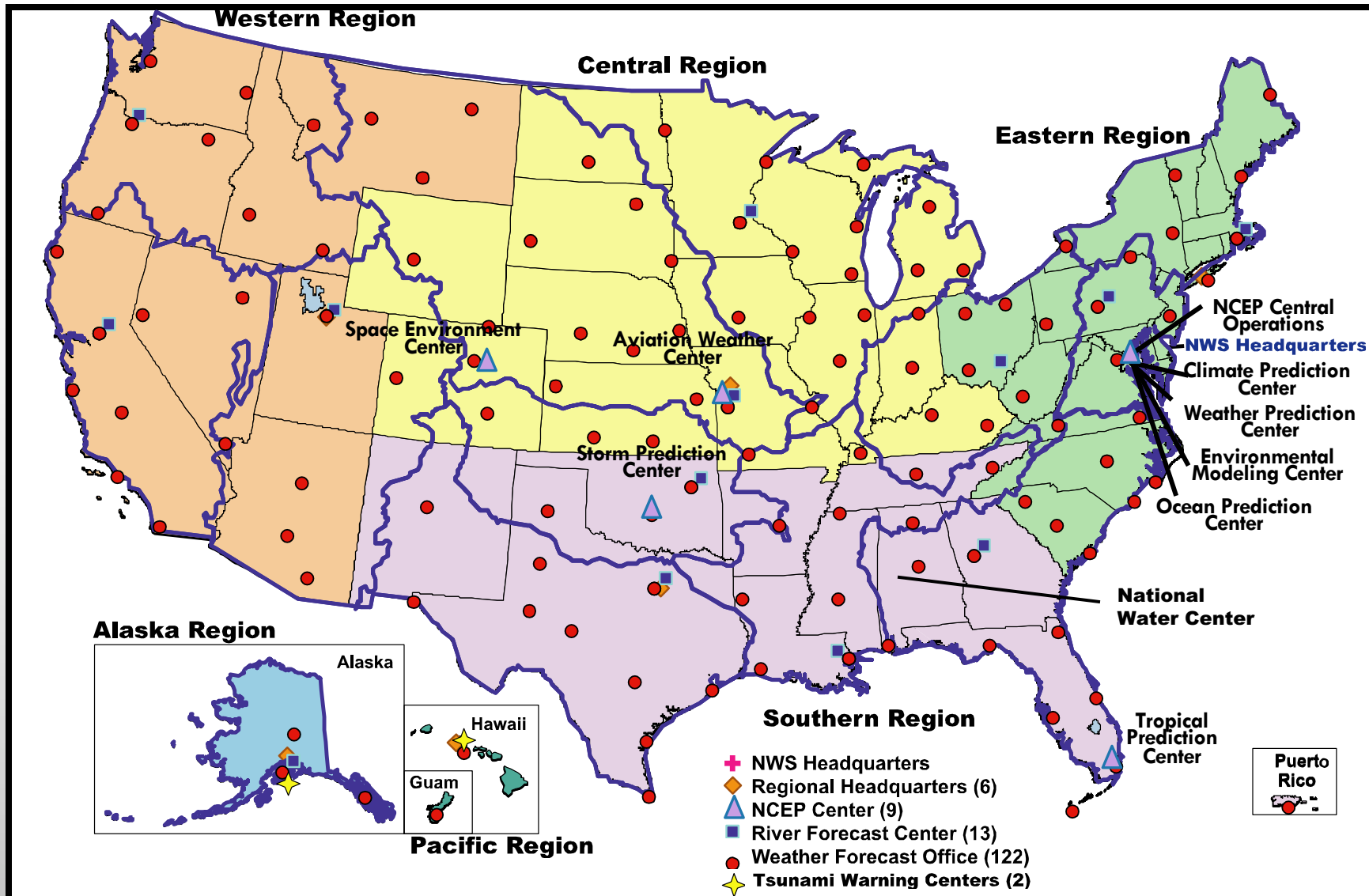
TODD HAMILL

SERVICE COORDINATION HYDROLOGIST

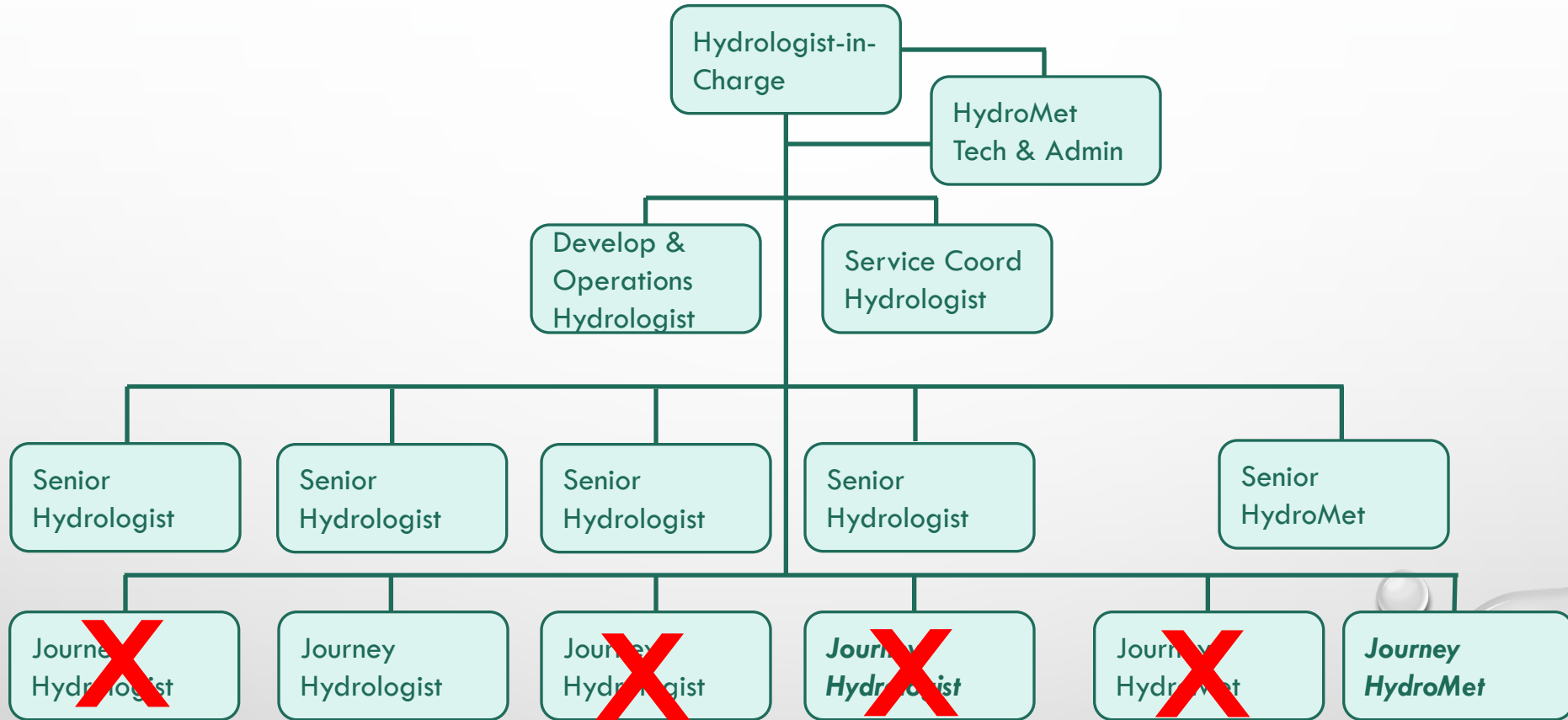
SOUTHEAST RIVER FORECAST CENTER

AUGUST 9TH, 2022

NWS operational Infrastructure



SERFC Staffing Model



Approximately 50% Operations/50% Research, Maintenance, & Support

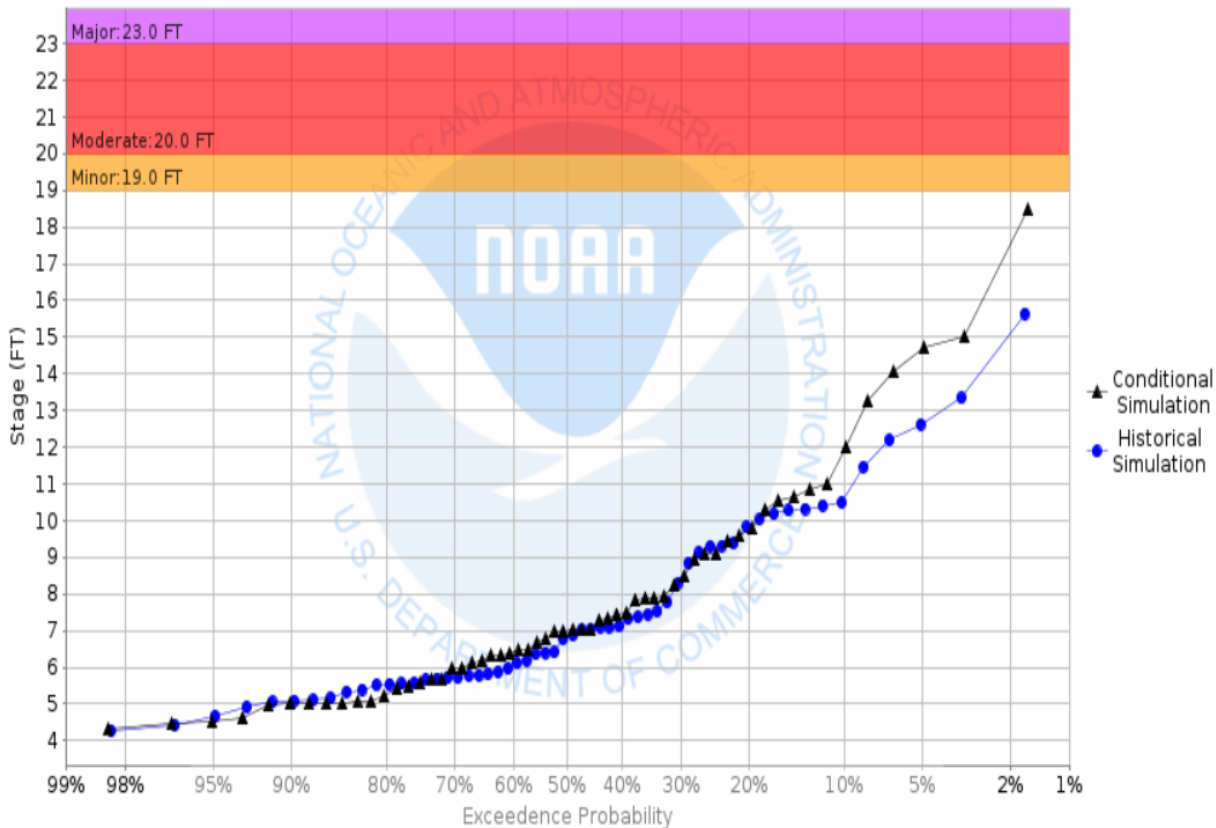
ENSEMBLE STREAMFLOW PREDICTION (ESP)

▲_{CS} = **Conditional Simulation**

●_{HS} = **Historical Simulation**

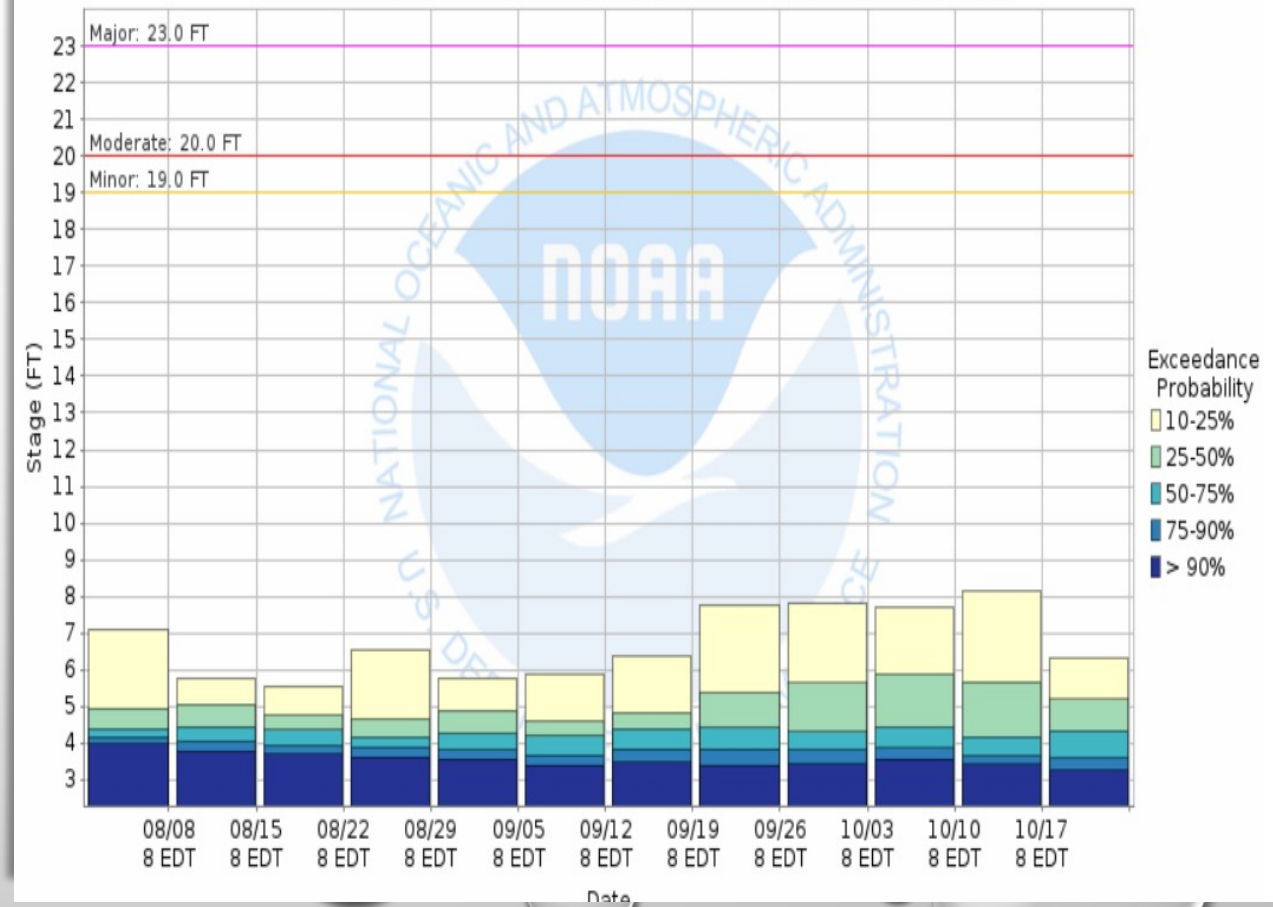
Chances of Exceeding River Levels on the North Oconee River at Athens
Forecast for the period 08/01/2022 - 10/30/2022

This is a conditional simulation based on the current conditions as of 08/01/2022

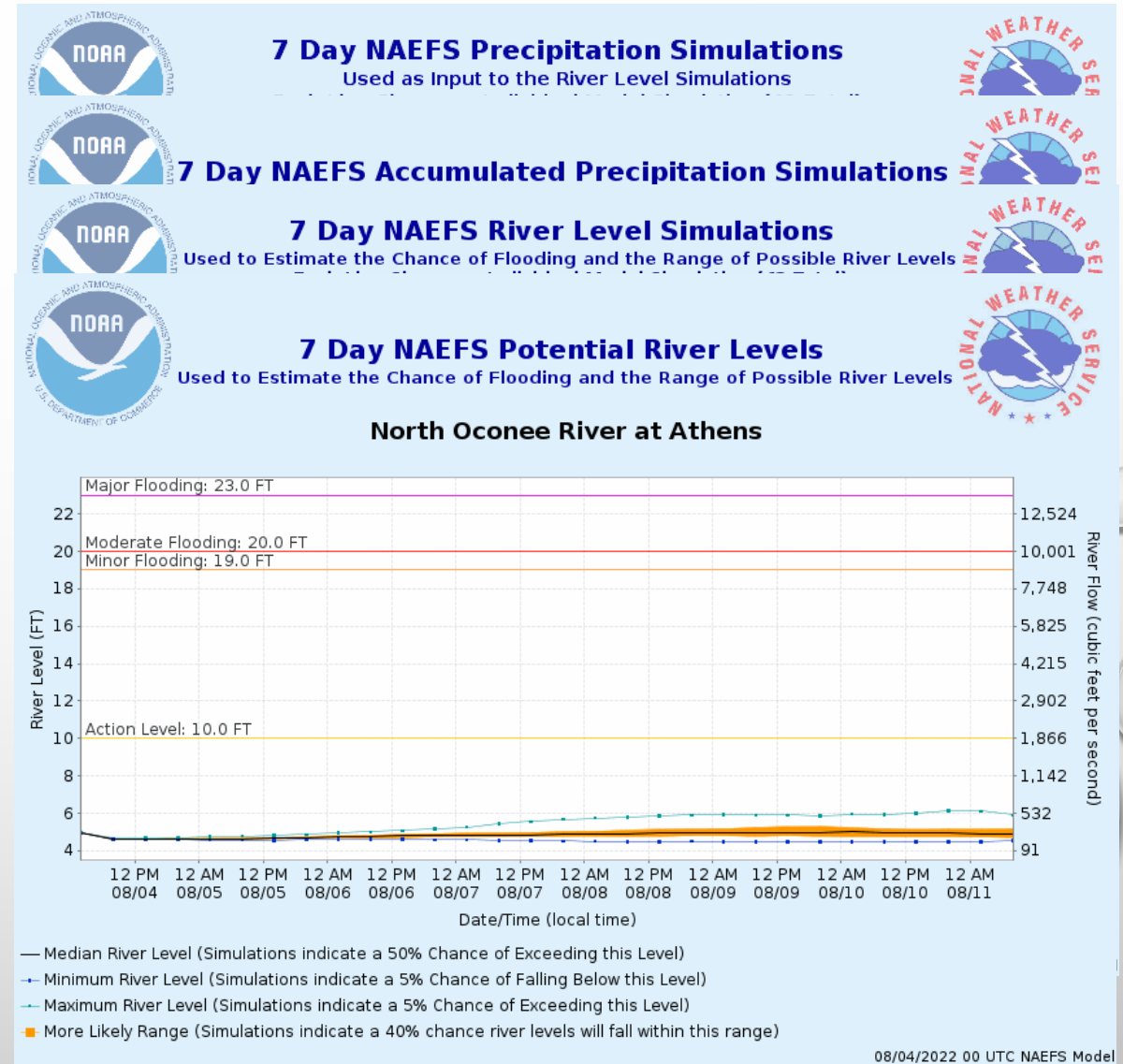
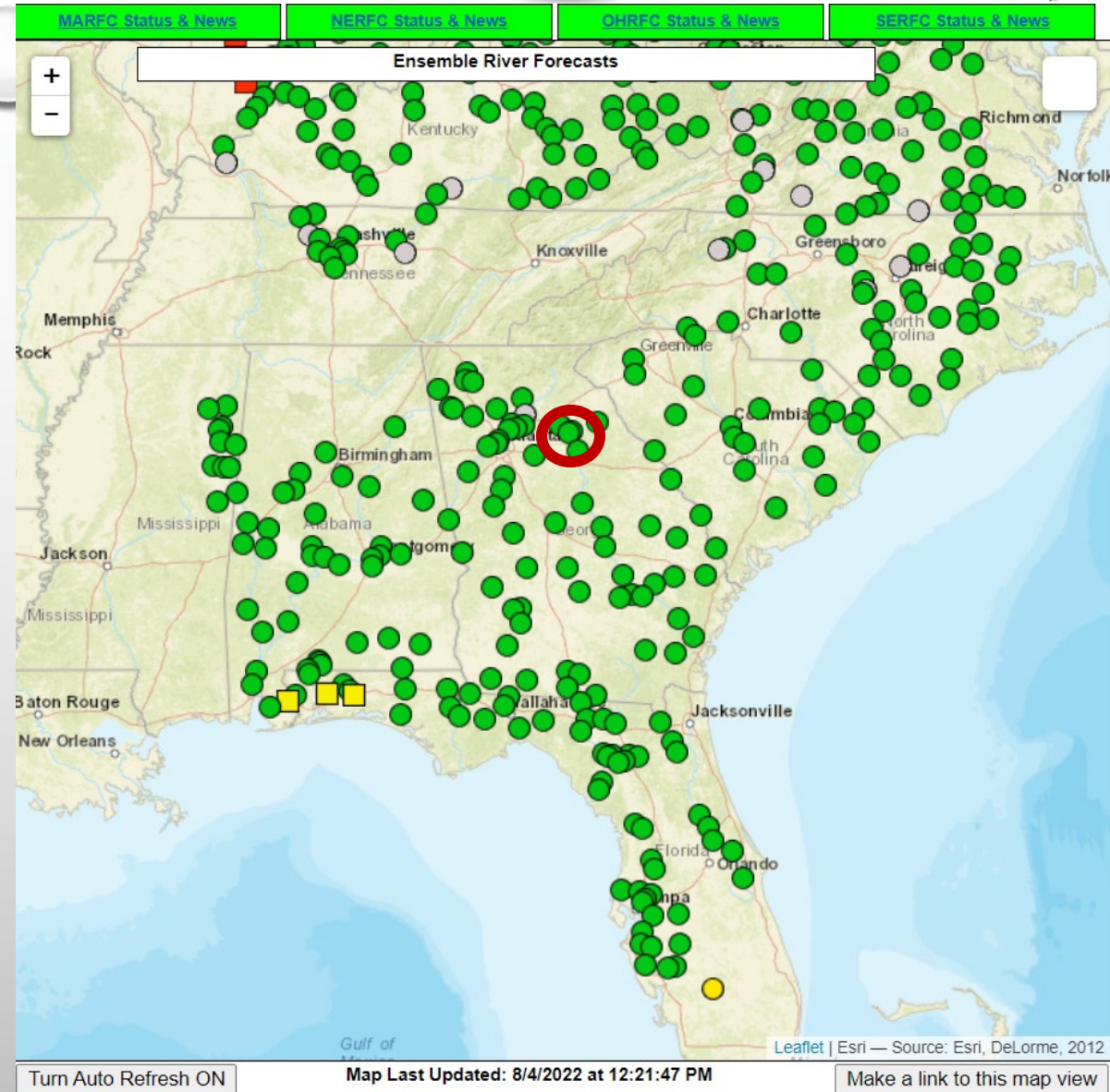


Weekly Chance of Exceeding River Levels on the North Oconee River at Athens
Forecast for the period 08/01/2022 - 10/30/2022

This is a conditional simulation based on the current conditions as of 08/01/2022



Meteorological Model Ensemble Forecast System (MMEFS)



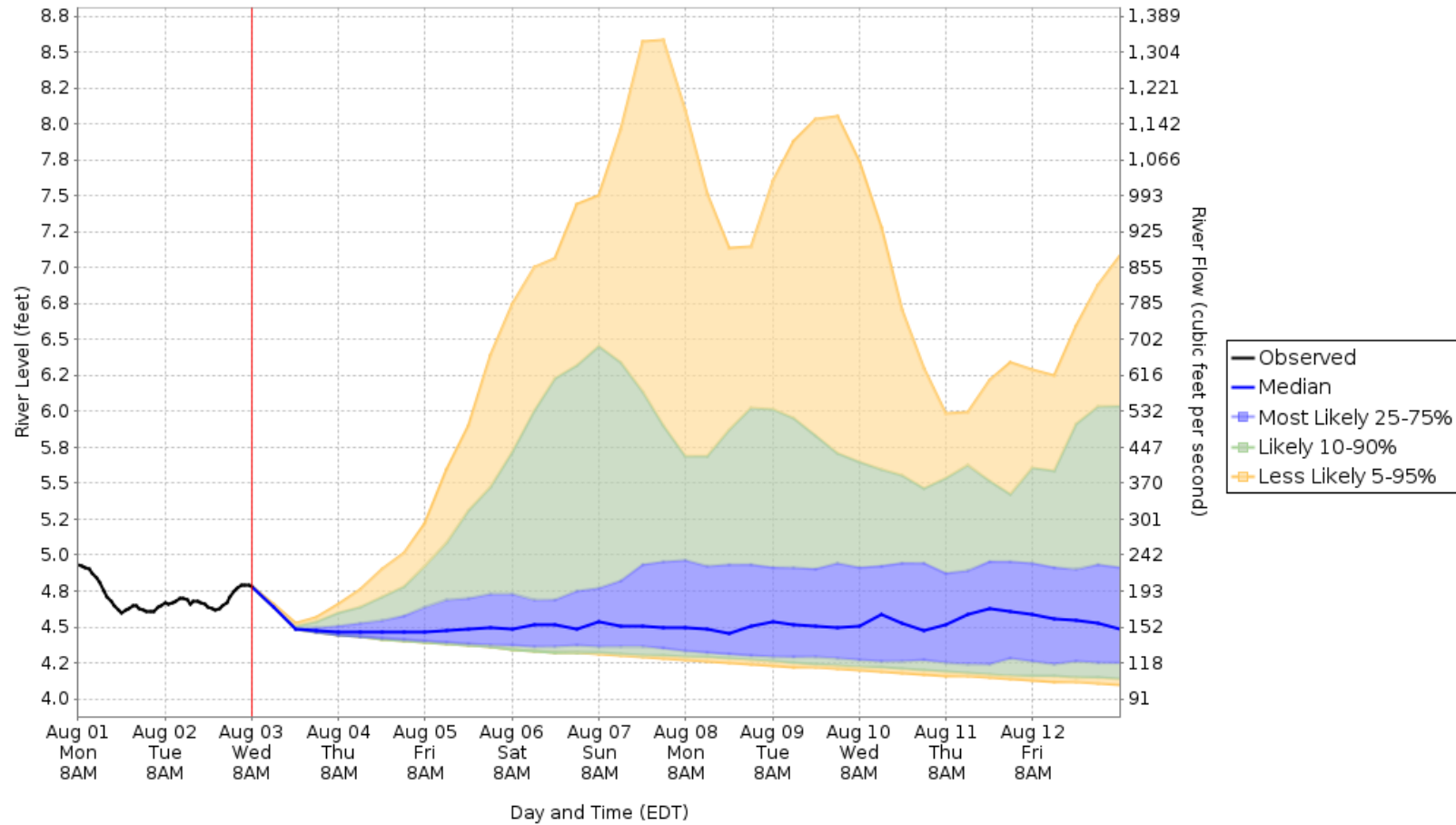
HEFS OUTPUT

10 Day River Level Probabilities

Used to Estimate the Range of Possible River Levels
[without ENSPOST (Experimental)]

Caution: Official forecast may be updated after this graph is generated.
For the latest official forecast, go to <http://water.weather.gov/ahps>

North Oconee River at Athens (NOCG1)





THANK YOU!

TODD HAMILL

SERVICE COORDINATION HYDROLOGIST

WWW.WEATHER.GOV/SERFC

TODD.HAMILL@NOAA.GOV

