



Chattahoochee River - Azalea Park

Courtesy: Jean Mathis





Cascade Springs Nature Reserve

Courtesy: William Ponder

Water Resources in Metro North Georgia

- The region is underlain by granite bedrock
- Groundwater use is limited





**98% of Metropolitan Atlanta's Water is Supplied through
Surface Water Sources**



Allatoona Dam
Courtesy: Stephen Weiss

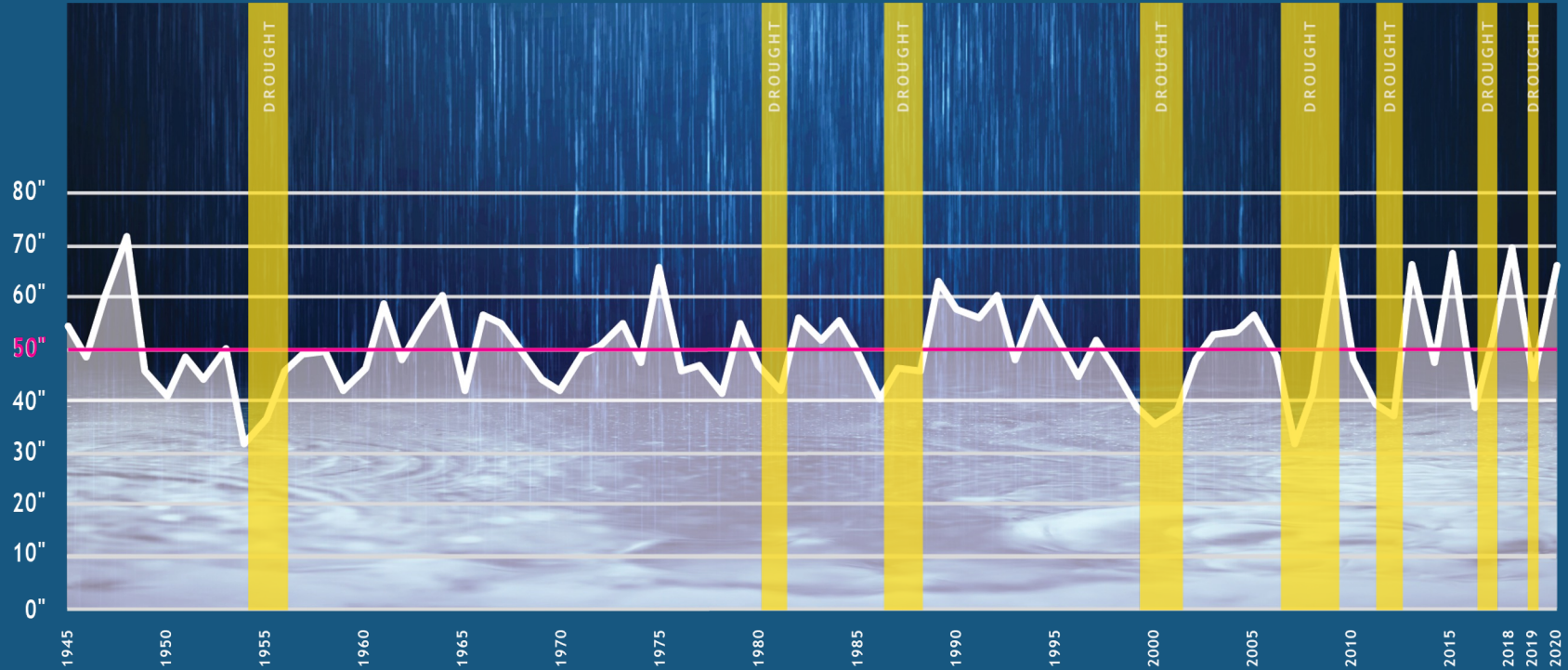


**~80% of our Water Supply is from
Corps Reservoirs and Related Rivers**

Cycles of Floods and Droughts

Annual Rainfall

Average Annual Rainfall = 50 inches



While we receive abundant rain most years, multi-year droughts stress our water supply and have become more frequent.







District Conservation Requirements

(in 2017)

- Conservation pricing
- Replace old, inefficient toilets
- Pre-rinse spray valve replacement program
- Rain sensor shut-off on new irrigation systems
- Sub-unit meters in new multi-family buildings
- Water system leak reduction and repair
- Residential water audits
- Low-flow retrofit kits to customers
- Commercial water use assessments
- Education programs



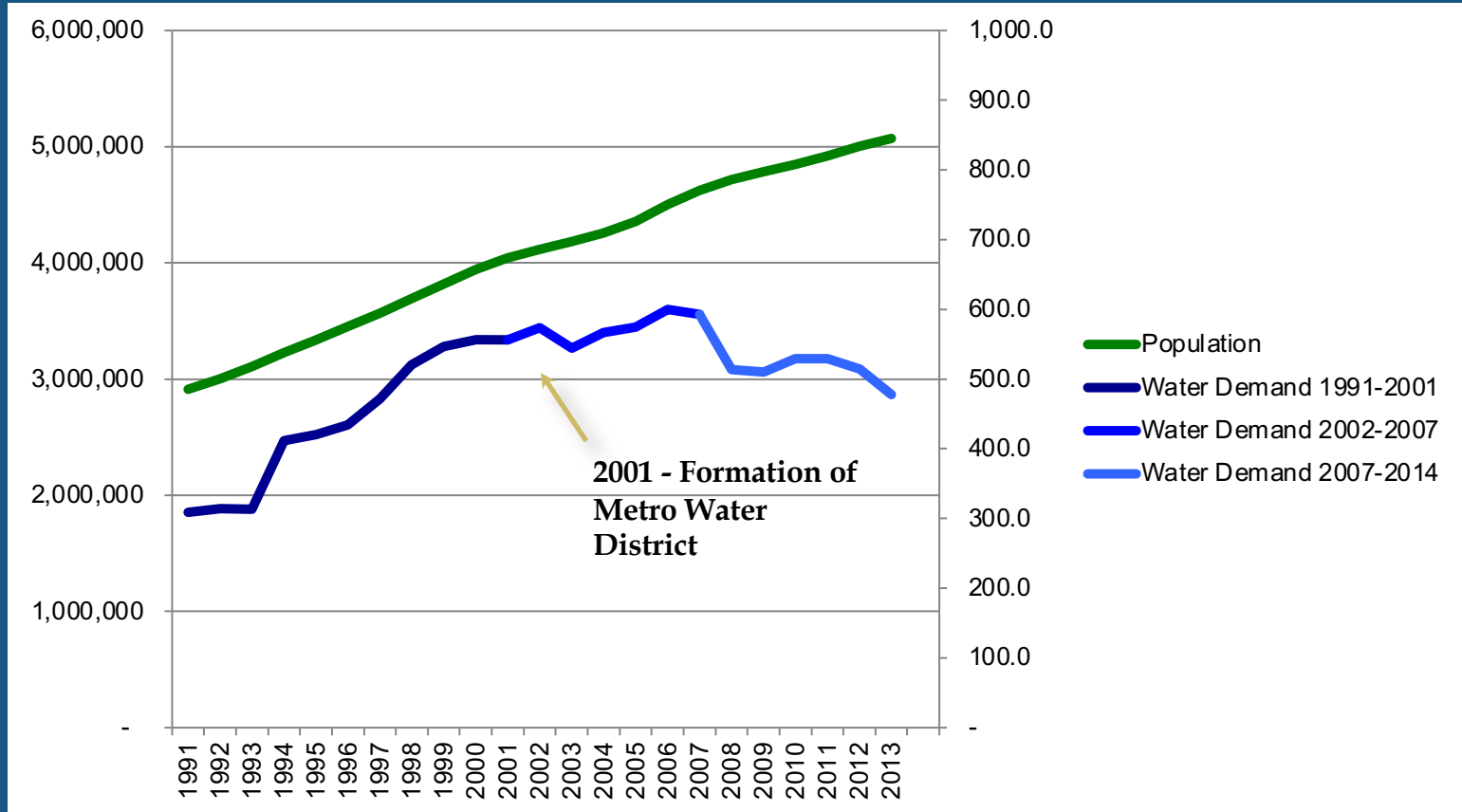
TOILETS REPLACED

150,000

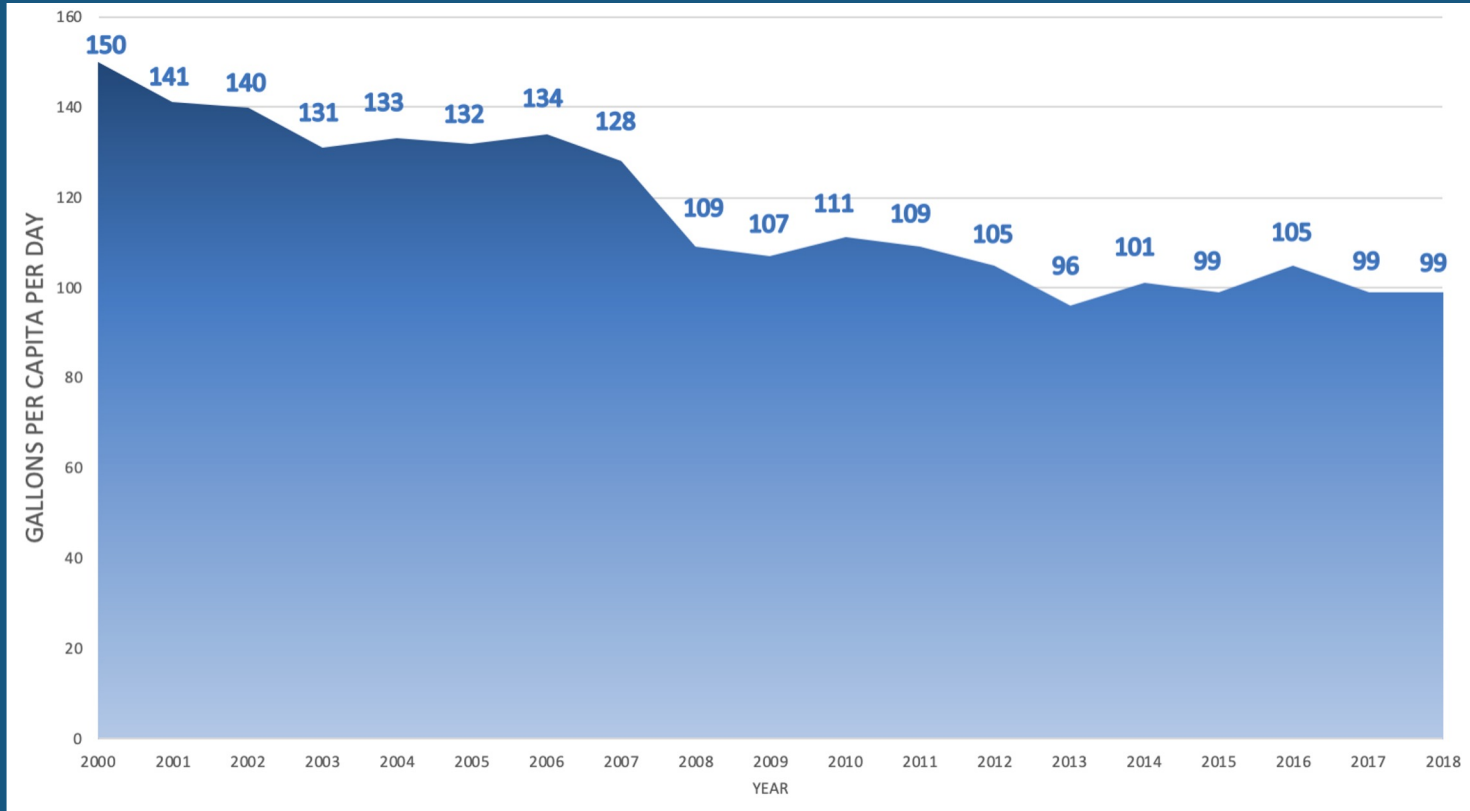
The Toilet Rebate Program began in 2008. Replacement rebates have helped replace over 150,000 old and inefficient toilets.

2.6 MILLION GALLONS
A DAY SAVED

Water Withdrawals Over Time



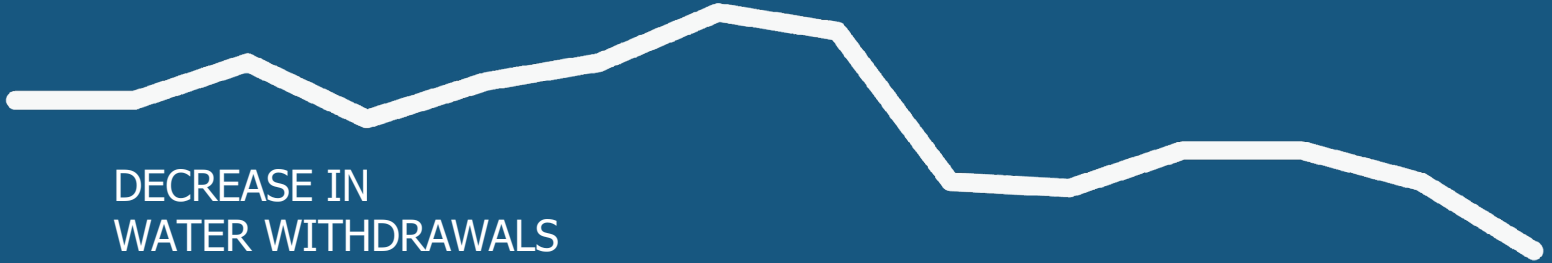
Declining Per Capita Demand



1.3M INCREASE IN
POPULATION



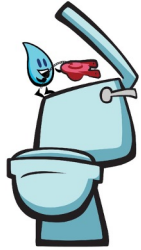
Since 2000, total water use has decreased even as the region added over 1,300,000 people



DECREASE IN
WATER WITHDRAWALS

Want to stop a running toilet?

FLIP YOUR FLAPPER



Replace a **toilet flapper** in just **six steps**:

1. Turn off the water to your toilet
2. Remove tank cover and flush
3. Remove old flapper
4. Attach new flapper to pegs
5. Reattach/adjust chain for a tight seal
6. Turn water on and flush



Pro tip: Before you look inside your tank to

Test your toilet for leaks and

FLIP YOUR FLAPPER



Does your toilet have a silent leak? Drop a few drops of food coloring or a dye tablet into your toilet's tank and wait 10 minutes. If the dye shows up in the bowl, you have a leak that can probably be fixed by replacing a worn toilet flapper. Don't forget to flush after to remove any leftover dye.



Watch Flo show how easy it is to test for toilet leaks:
www.youtube.com/watch?v=JFU_IDERo

Want to stop a running toilet?

FLIP YOUR FLAPPER



Do you know what a toilet flapper is? This simple rubber device holds water in the tank, then releases water into the bowl when you flush. It needs to be replaced at least **every five years** or your toilet could leak.

Replace your **toilet flapper** in just **six steps**:



Turn off water



Remove tank cover and flush



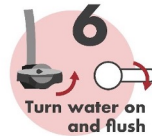
Remove old flapper



Attach new flapper to pegs



Reattach/adjust chain length for a tight seal



Turn water on and flush



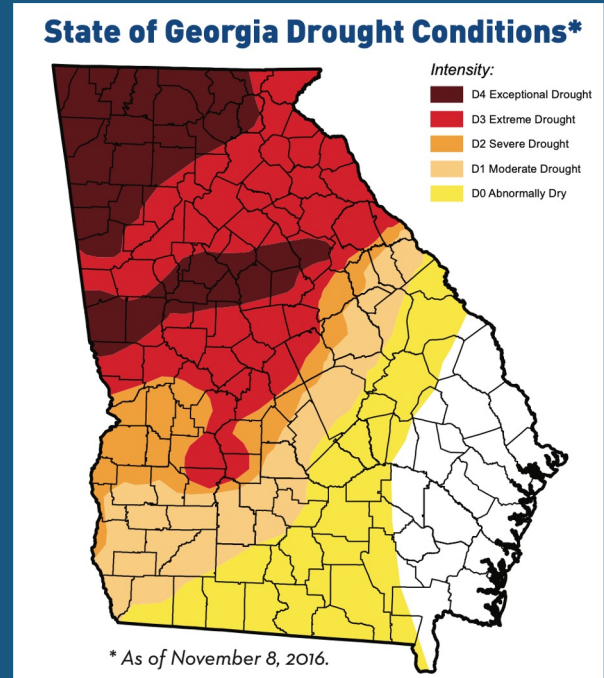
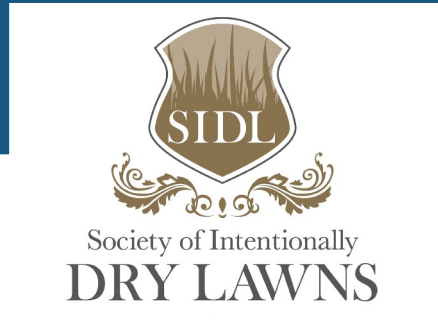
Pro tip: Before you install a new flapper, take a photo inside your tank to make sure you get the right type. Some flappers have a foam float on the chain that needs replacing too.

Your tank will thank you!



SUNDAY	MONDAY	TUESDAY	WEDNESDAY	THURSDAY	FRIDAY	SATURDAY
 ODD			 EVEN	 ODD		 EVEN

Only water as needed. In the fall and winter months, outdoor plants need less water. Water when plants show signs of distress (curling, wilting, graying foliage).



There is more work ahead of us

