

Pertinent 3-D Tomography Analysis Using

https://ips.ucsd.edu/stereom6

21:02:01 UTC

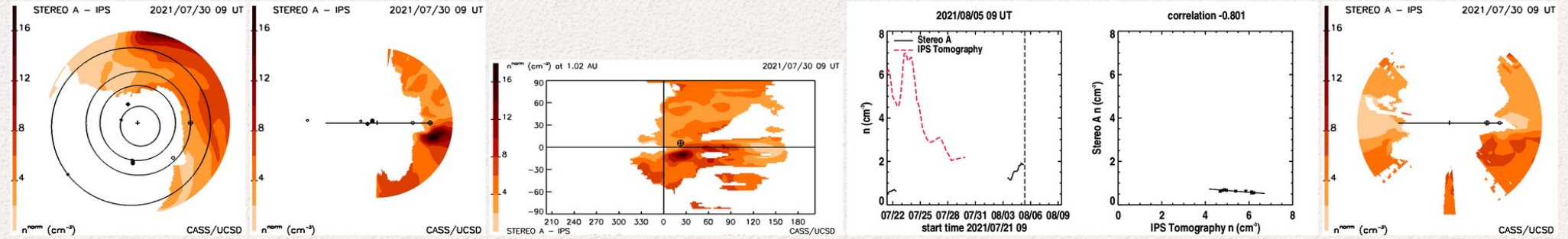
05-Aug-2021



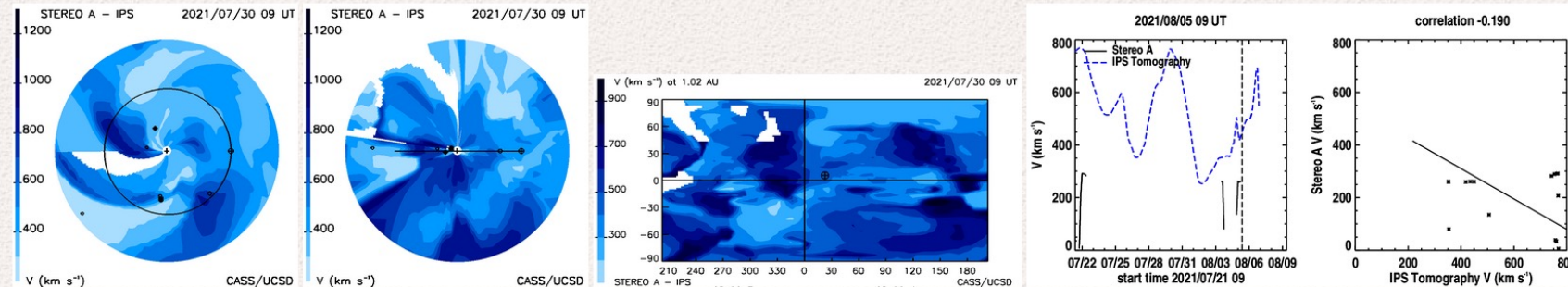
Home

STEREO D.V

Density (6 Days before present)

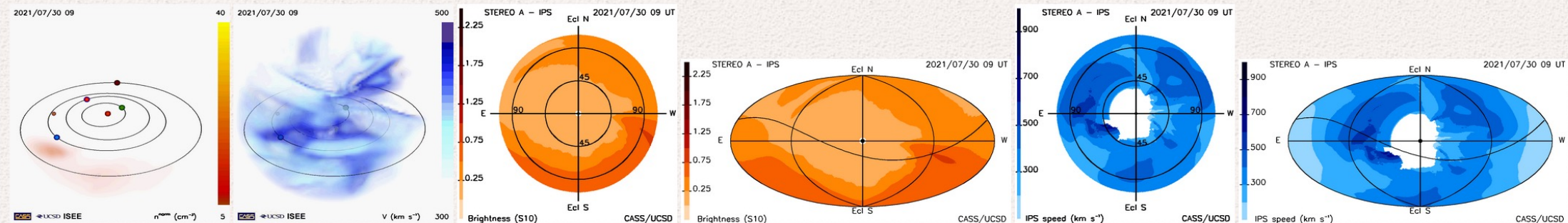


Radial Velocity (6 Days before present)



Near
 real time
 analyses

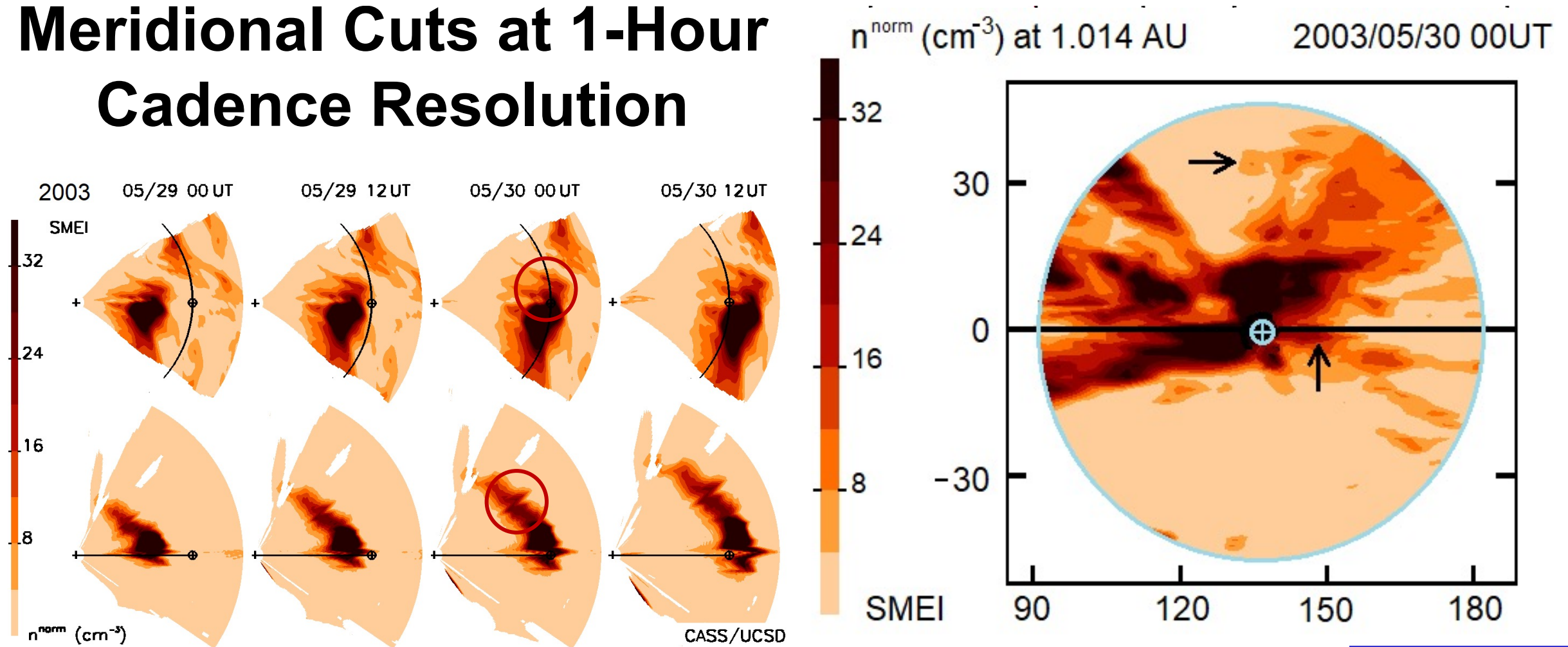
Remote Observer Views (6 Days before present)



Pertinent 3-D Tomography Prior to PUNCH Data Taking

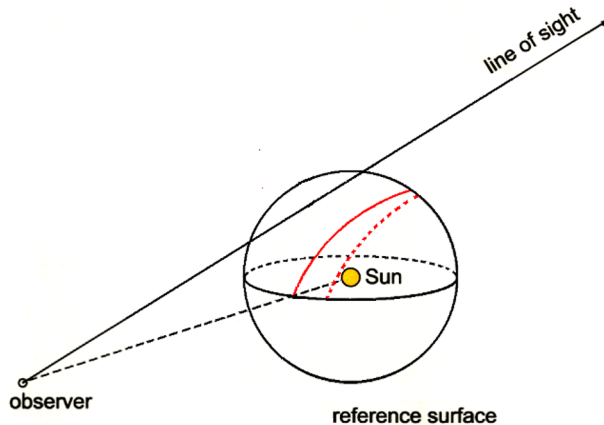
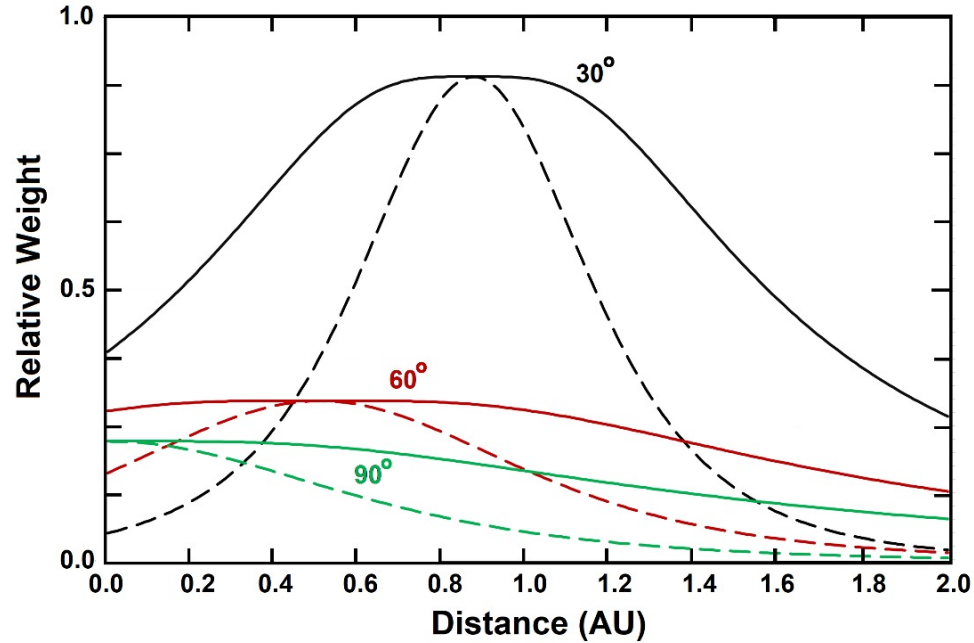
New SMEI Analysis Synoptic Cut at Earth Distance

Meridional Cuts at 1-Hour Cadence Resolution



Pertinent 3-D Tomography Prior to PUNCH Data Taking

Line-of-sight Response Thomson scattering



Jackson, B.V., *et al.*, 2008, *Adv. in Geosciences* 21, 339
Jackson *et al.*, 2020, *Frontiers in Astronomy and Space Sci.*, doi: 10.3389/fspas.2020.568429

**Heliospheric C.A.T. analyses:
example line-of-sight distribution
for each sky location to form the
source surface weighting of the
3-D reconstruction.**

PUNCH

