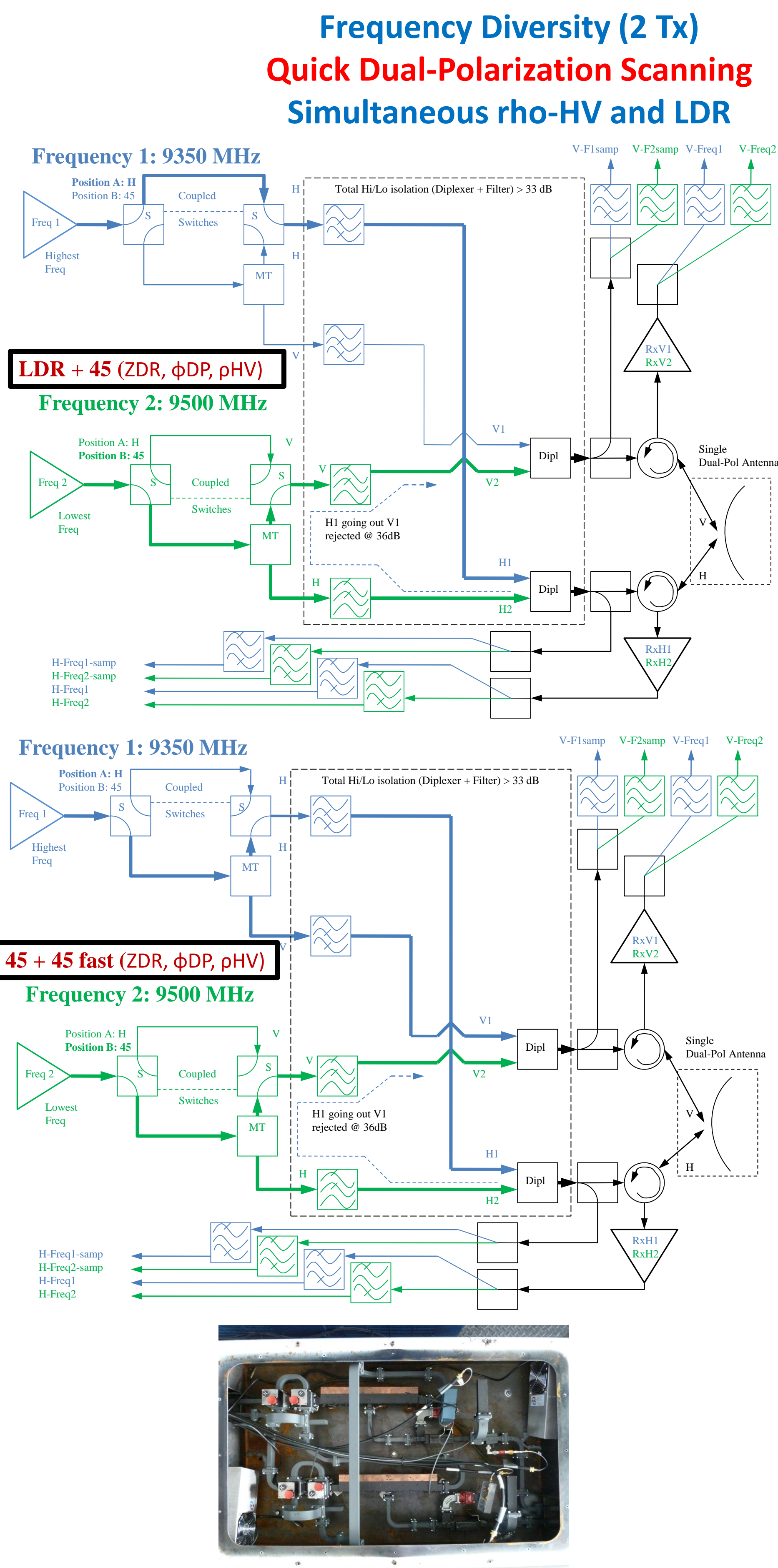


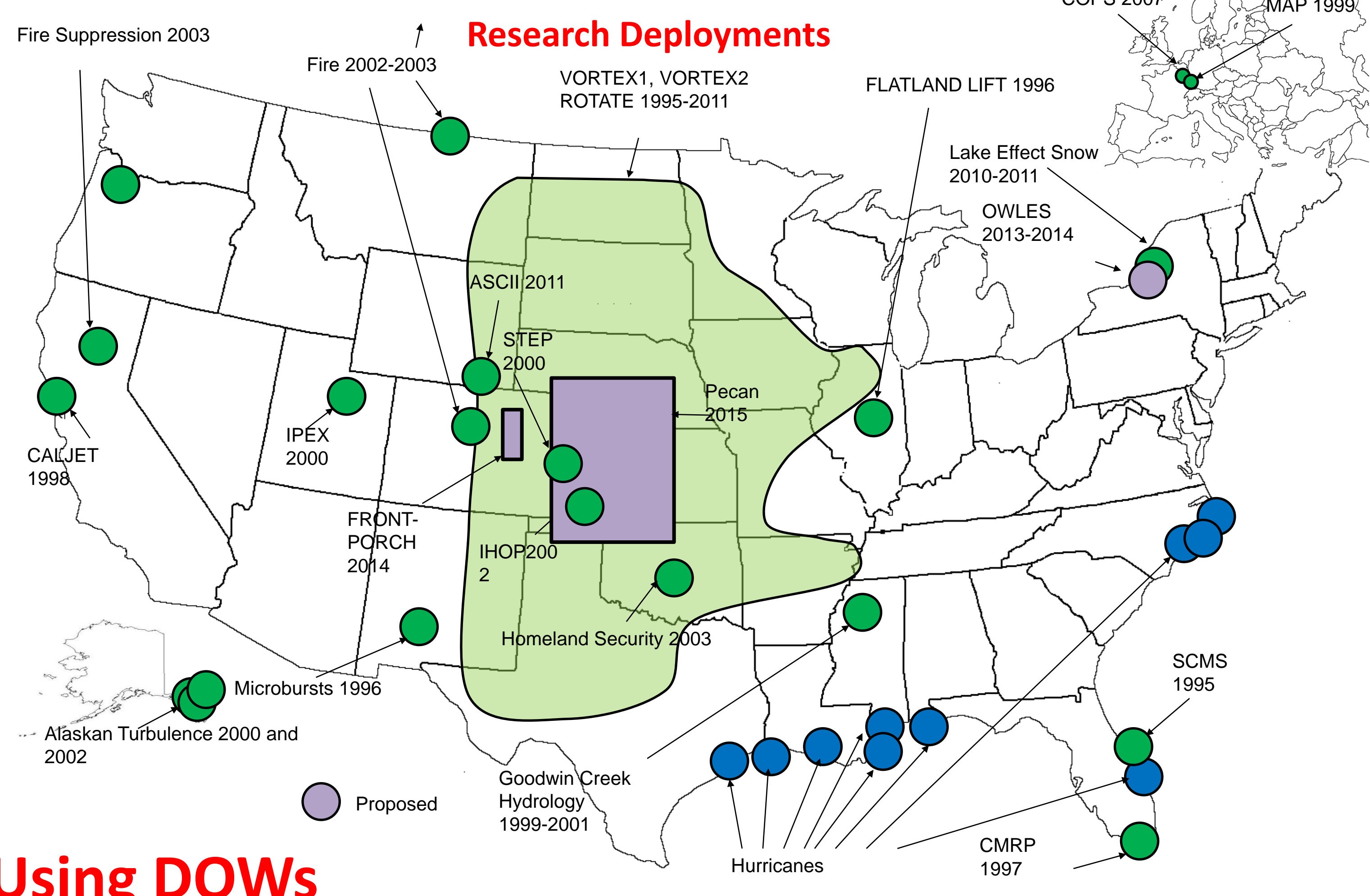
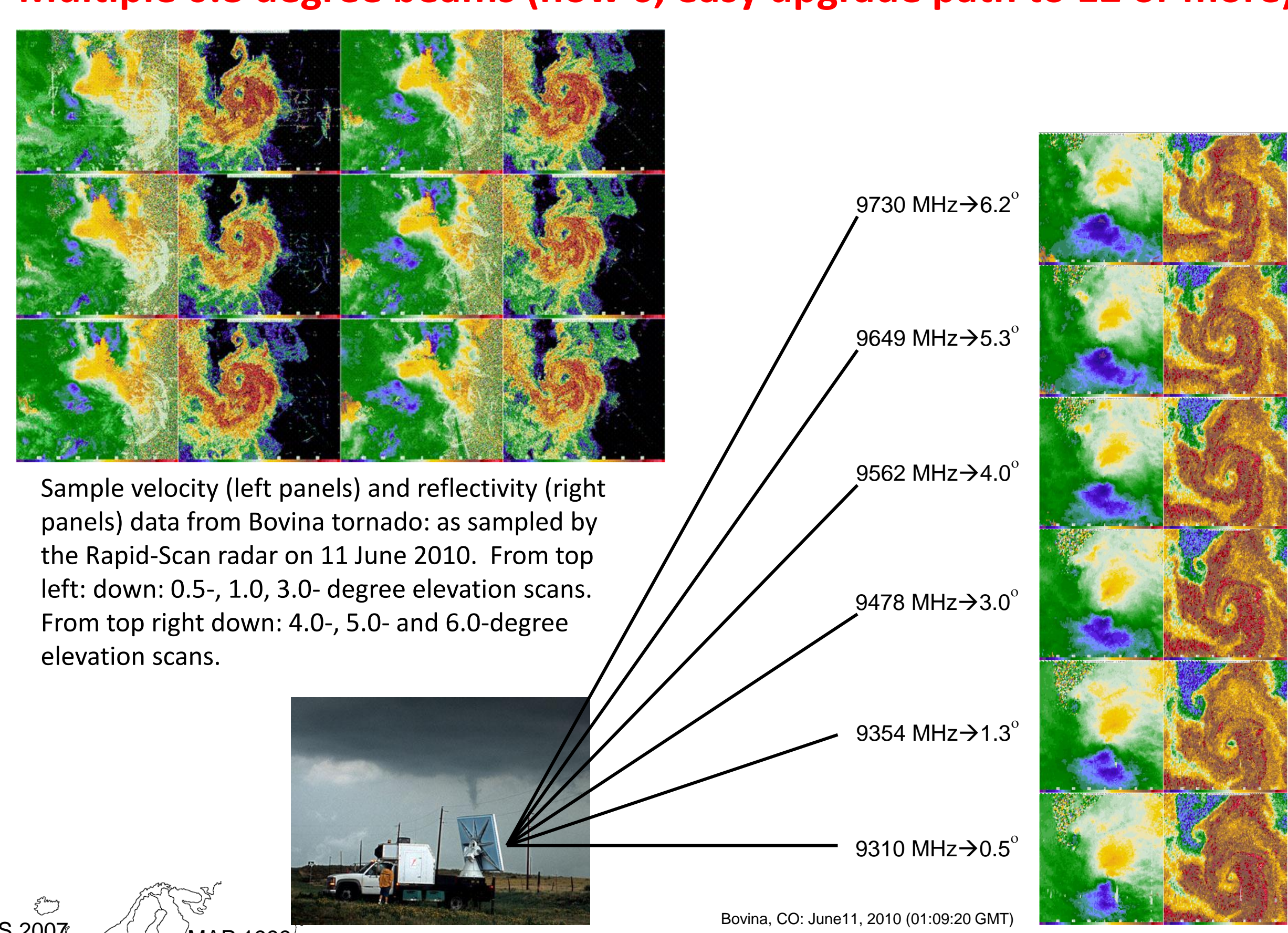


## Network of Targetable Mobile Radars Single, Dual and Multiple Doppler Integrated Operations with Mobile Mesonets and POD Deployments Student drivable and operable

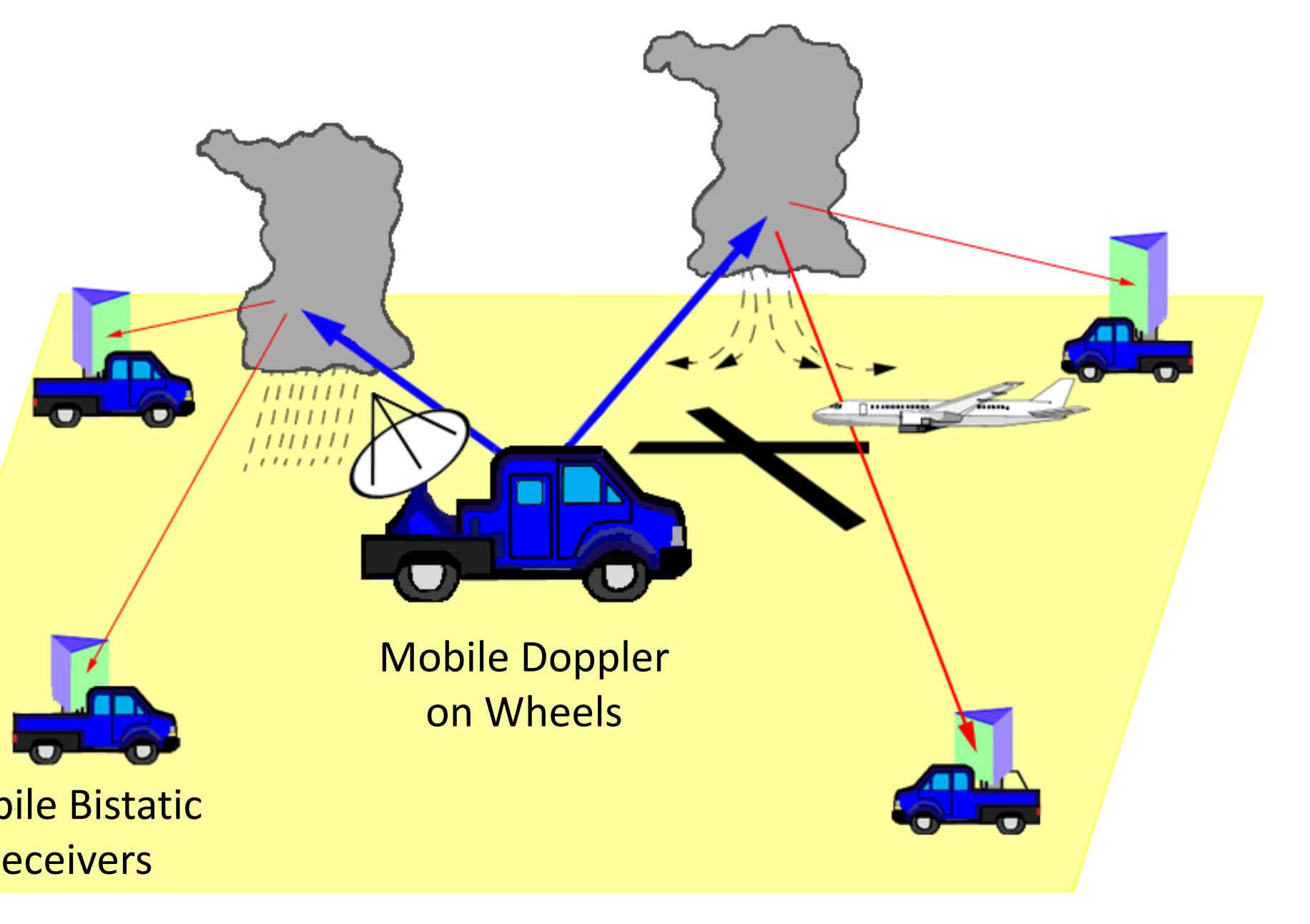
### Dual-Polarization, Dual-Frequency Mobile Doppler Radars



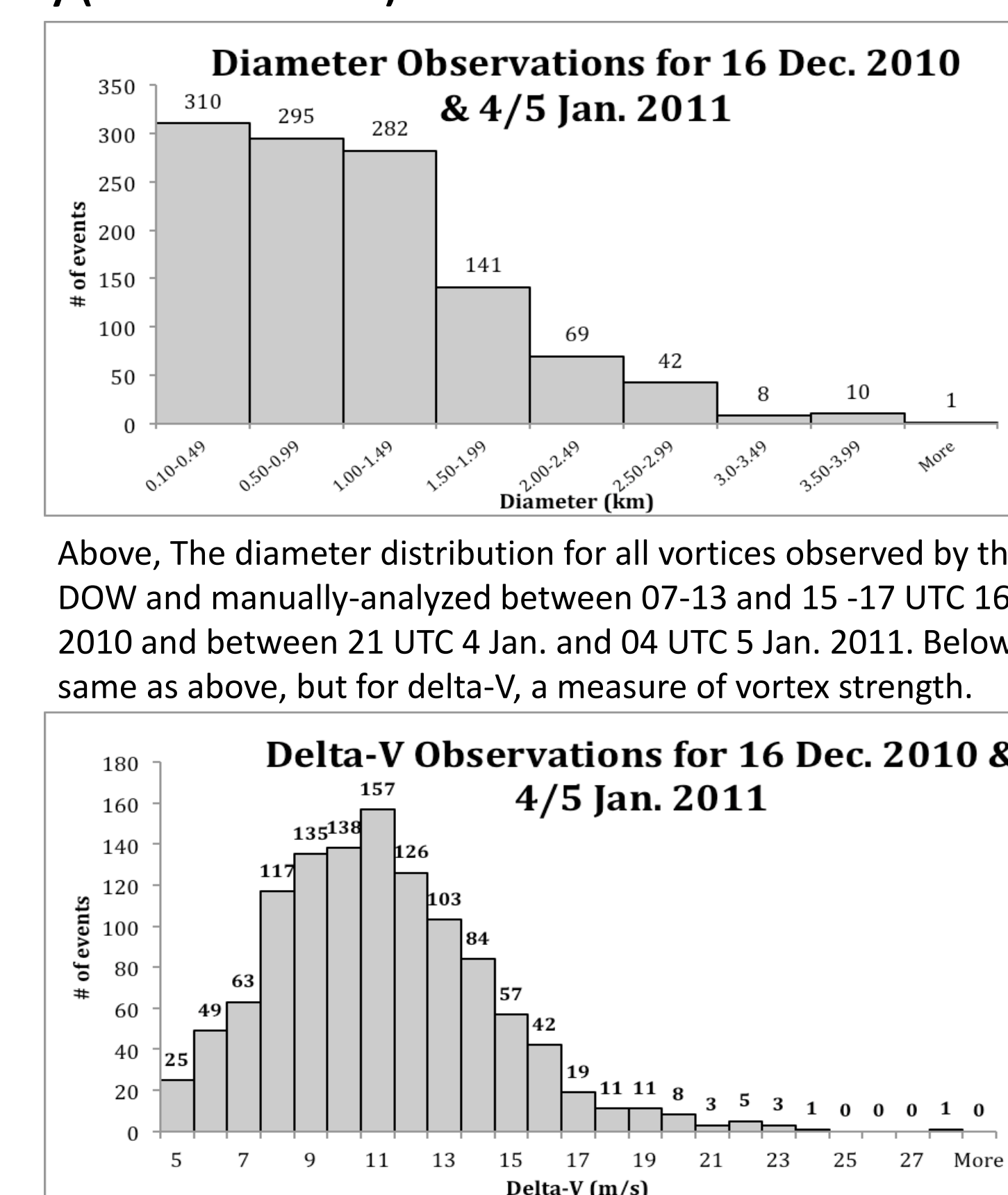
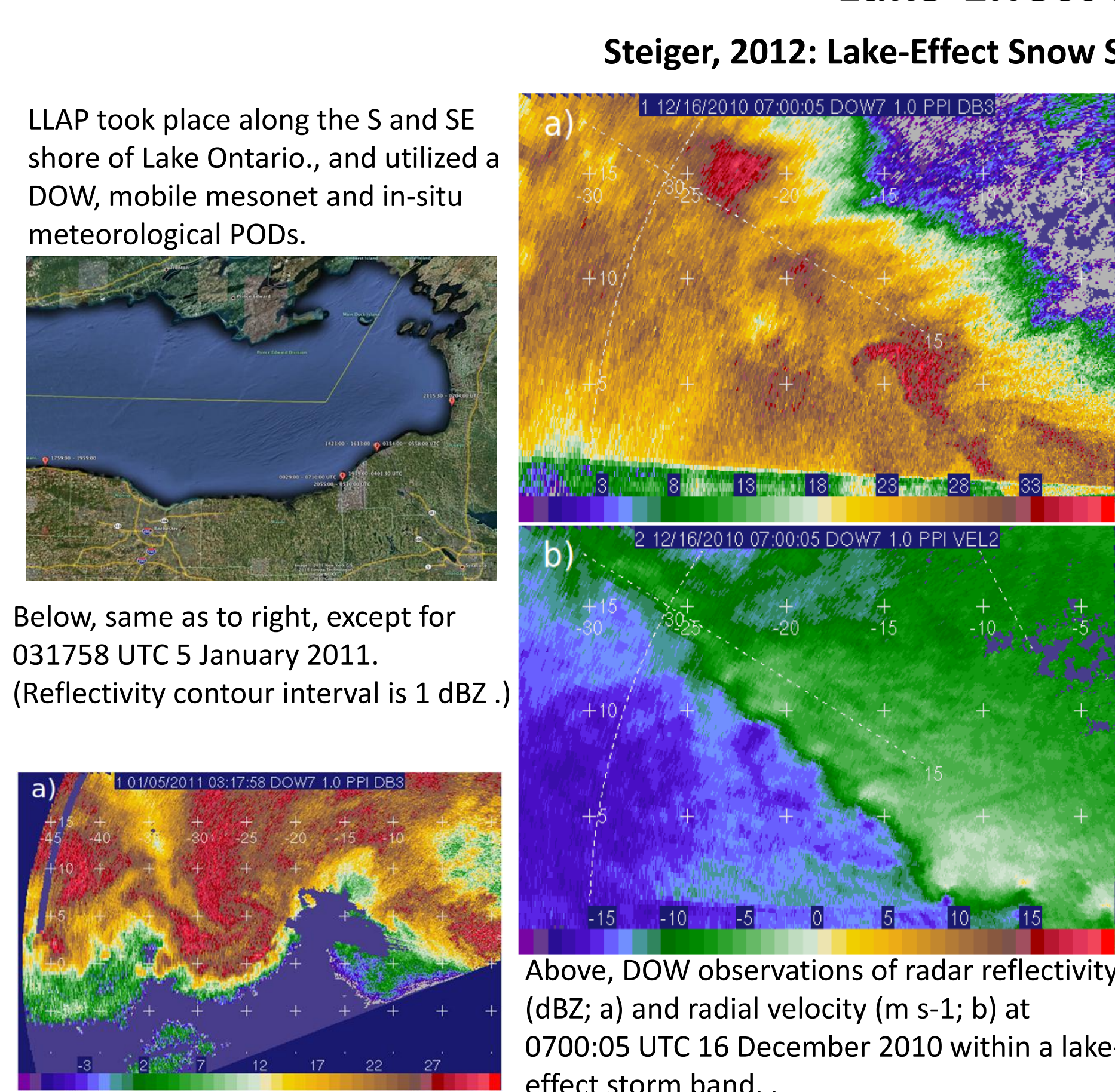
### Rapid-Scan Radar Rapid 3D volumes in 7 seconds or better Multiple 0.8 degree beams (now 6, easy upgrade path to 12 or more)



### Future Mobile Bistatic Network Highly overdetermined multiple-Doppler Direct measurements of W Passive Bistatic Receivers on Mobile Mesonets at Low Cost Modern computing capacity allows for optimized, highly overdetermined solutions to mitigate effects of multi-path



### Various Projects Using DOWs Lake-Effect Snow



### 74 Formal Publications Using DOW Data

**References**

Steiger, S. A. Stamm, D. Ruth, K. Jaska, T. Kress, B. Rathbun, R. Schrom, J. Frame, J. Wurman, K. Kosiba, 2012: Circulations, Bounded Weak Echo Regions, and Horizontal Vortices Observed by the Doppler on Wheels during Long Lake-Axis-Parallel Lake-effect Storms over Lake Ontario during the Winter of 2010-11. *Mon. Wea. Rev.*, **140**, 3397-3418.

Wurman, J., K. Kosiba, P. Robinson, 2012: In-Situ, Doppler Radar and Video Observations of the Interior Structure of a Tornado and Wind-Damage Relationship. *Bull. Amer. Meteor. Soc.*, in press.

Friedrich, K., E. A. Kalina, F. J. Masters, C.R. Lopez, 2012: Drop-size distributions in thunderstorms measured by optical disdrometers during VORTEX2. *Mon. Wea. Rev.*, in press.

Nolan, D.S., 2012: On the Use of Doppler-Radar-Derived Wind Fields to Diagnose the Secondary Circulations of Tornadoes. Submitted. *J. Atmos. Sci.*

Wakimoto, R.M., P. Stauffer, W.-C. Lee, N.T. Atkins, J. Wurman, 2012: Finescale Structure of the LaGrange, Wyoming, Tornado during VORTEX2: GBVTD and Photogrammetric Analyses. *Mon. Wea. Rev.*, **140**, 3897-3918.

Toth, M., R. J. Trapp, J. Wurman, K. A. Kosiba, 2012: Improving tornado intensity estimates with Doppler radar. *WFO Forecasting*, Accepted, in press.

Atkins, N. T., A. McGee, R. Ducharme, R.M. Wakimoto, J. Wurman, 2012: The LaGrange Tornado during VORTEX2. Part II: Photogrammetric Analysis of the Tornado Combined with Dual-Doppler Radar Data. *Mon. Wea. Rev.*, **140**, 2916-2938.

Markowski, P., Y. Richardson, J. Marquis, R. Davies-Jones, J. Wurman, K. Kosiba, P. Robinson, E. Rasmussen, D. Dowell, 2012: The Pre-tornado Phase of the Goshen County, Wyoming, Supercell of 5 June 2009 Intercepted by VORTEX2. Part II: Intensification of Low-Level Rotation. *Mon. Wea. Rev.*, **140**, 2916-2938.

Markowski, P., Y. Richardson, J. Marquis, J. Wurman, K. Kosiba, P. Robinson, D. Dowell, E. Rasmussen, R. Davies-Jones, 2012: The Pre-tornado Phase of the Goshen County, Wyoming, Supercell of 5 June 2009 Intercepted by VORTEX2. Part I: Evolution of Kinematic and Surface Thermodynamic Features. *Mon. Wea. Rev.*, **140**, 2887-2915.

Wurman, J., D. Dowell, Y. Richardson, P. Markowski, E. Rasmussen, D. Burgess, L. Wicker, H.B. Bluestein 2012: The Second Verification of the Origins of Rotation in Tornadoes Experiment-VORTEX2. *Bull. of the Amer. Meteor. Soc.*, **93**, 1147-1170.

Potvin, C.K., L.J. Wicker, A. Shapiro, 2012: Assessing Errors in Variational Dual-Doppler Wind Syntheses of Supercell Thunderstorms Observed by Storm-Scale Mobile Radars. *J. Atmos. Oceanic Technol.*, **29**, 1009-1025.

Potvin, C.K., A. Shapiro, M. Xue, 2012: Impact of a Vertical Vorticity Constraint in Variational Dual-Doppler Wind Analysis: Tests with Real and Simulated Supercell Data. *J. Atmos. Oceanic Technol.*, **29**, 32-49.

Marquis, J., Y. Richardson, P. Markowski, D. Dowell, J. Wurman, 2012: Tornado Maintenance Investigated with High-Resolution Dual-Doppler and EnKF Analysis. *Mon. Wea. Rev.*, **140**, 3-27.

Wulfmeyer, V. et al., 2011: The Convective and Orographically-Induced Precipitation Study (COPS): the scientific strategy, the field phase and research highlights. *Q. J. Roy. Meteor. Soc.*, **137**, 3-30.

Potvin, C.K., A. Shapiro, M.J. Biggstaff, J.M. Wurman, 2011: The VDAC Technique: A Variational Method for Detecting and Characterizing Convective Vortices in Multiple-Doppler Radar Data. *Mon. Wea. Rev.*, **139**, 2593-2613.

Toth, M., E. Jones, D. Pittman, D. Solomon, 2011: DOW Radar Observations of Wind Farms. *Bull. of the Amer. Meteor. Soc.*, **92**, 987-995.

Bennett, L.J. et al., 2011: Initiation of convection over the Black Forest mountains during COPS IDP15a. *Q. J. Roy. Meteor. Soc.*, **137**, 176-189.

Wakimoto, R.M., N.T. Atkins, J. Wurman, 2011: The LaGrange Tornado during VORTEX2. Part I: Photogrammetric Analysis of the Tornado Combined with Single-Doppler Radar Data. *Mon. Wea. Rev.*, **139**, 2233-2258.

Wurman, J., K. Kosiba, P. Markowski, Y. Richardson, D. Dowell, P. Robinson, 2010: Finescale Single- and Dual-Doppler Analysis of Tornado Identification, Maintenance, and Dissipation in the Origins, Nebraska, Supercell. *Mon. Wea. Rev.*, **138**, 4439-4455.

Kosiba, K., J. Wurman, 2010: The Three-Dimensional Axisymmetric Wind Field Structure of the Spencer, South Dakota, 1998 Tornado. *J. Atmos. Sci.*, **67**, 3074-3083.

Bennett, L.J., T.M. Weckwerth, A.M. Blyth, B. Geerts, G. Miao, Y.P. Richardson, 2010: Observations of the Evolution of the Nocturnal and Convective Boundary Layers and the Structure of Open-Celled Convection on 14 June 2002. *Mon. Wea. Rev.*, **138**, 2589-2607.

Byko, Z., P. Markowski, Y. Richardson, J. Wurman, E. Adlerman, 2009: Descending Reflectivity Cores in Supercell Thunderstorms Observed by Mobile Radars and in a High-Resolution Numerical Simulation. *Weather and Forecasting*, **24**, 155-186.

Frame, J., P. Markowski, Y. Richardson, J. Straka, J. Wurman, 2009: Polarimetric and Dual-Doppler Radar Observations of the Lipscomb County, Texas, Supercell Thunderstorm on 23 May 2002. *Mon. Wea. Rev.*, **137**, 544-561.

Marquis, J., Y. Richardson, J. Wurman, P. Markowski, 2008: Single- and Dual-Doppler Observations of a Tornado Vortex and Surrounding Storm-Scale Flow in the Crowell, Texas, Supercell of 30 April 2000. *Mon. Wea. Rev.*, **136**, 5107-5043.

Kosiba, K., R.J. Trapp, J. Wurman, 2008: An Analysis of an Axisymmetric Three-dimensional Low-level Wind Field in a tornado using mobile radar observations. *Geophys. Res. Letters*, **35**, L0805.

Wulfmeyer, V. et al., 2008: Research Campaign: The Convective and Orographically Induced Precipitation Study (COPS). *Bull. of the Amer. Meteor. Soc.*, **89**, 1477-1486.

Friedrich, K., D.E. Kingsmill, C. Flamant, H.V. Murphy, R.M. Wakimoto, 2008: Kinematic and Moisture Characteristics of a Nonprecipitating Cold Front Observed during IHOP. Part II: Alongfront Structures. *Mon. Wea. Rev.*, **136**, 3796-3821.

Richardson, Y., P. Markowski, J. Verlinde, J. Wurman, 2008: Field Experiment: Integrating Classroom Learning And Research: The Pennsylvania Area Mobile Radar Experiment (PAMREX). *Bull. of the Amer. Meteor. Soc.*, **89**, 1097-1101.

Miao, Q., B. Geerts, 2007: Finescale Vertical Structure and Dynamics of Some Dryline Boundaries Observed in IHOP. *Mon. Wea. Rev.*, **135**, 4161-4184.

Ruban, N.S., C.L. Ziegler, E.N. Rasmussen, Y.P. Richardson, 2007: The Dryline on 22 May 2002 during IHOP: Ground-Radar and in Situ Data Analyses of the Dryline and Boundary Layer Evolution. *Mon. Wea. Rev.*, **135**, 2473-2505.

Ziegler, C.L., E.N. Rasmussen, M.S. Buban, Y.P. Richardson, L.J. Miller, R.M. Rabin, 2007: The "Triple Point" on 24 May 2002 during IHOP Part II: Ground-Radar and in Situ Boundary Layer Analysis of Cumulus Development and Convection Initiation. *Mon. Wea. Rev.*, **135**, 2443-2472.

Ziegler, C.L., M.S. Buban, E.N. Rasmussen, 2007: A Lagrangian Objective Analysis Technique for Assimilating in Situ Observations with Multiple-Radar-Derived Airflow. *Mon. Wea. Rev.*, **135**, 2417-2442.

Martin, W.J., A. Shapiro, 2007: Discrimination of Bird and Insect Radar Echoes in Clear Air Using High-Resolution Radars. *J. Atmos. Oceanic Technol.*, **24**, 1215-1230.

Sippel, B.D., B. Geerts, 2007: Finescale Vertical Structure and Evolution of a Preconvective Dryline on 19 June 2002. *Mon. Wea. Rev.*, **135**, 2111-2134.

Wurman, J., Y. Richardson, C. Alexander, S. Weygandt, P.F. Zhang, 2007: Dual-Doppler Analysis of Winds and Vorticity Budget Terms near a Tornado. *Mon. Wea. Rev.*, **135**, 2392-2405.

Marquis, J.N., Y.P. Richardson, J.M. Wurman, 2007: Kinematic Observations of Mesocyclones along Boundaries during IHOP. *Mon. Wea. Rev.*, **135**, 1749-1768.

Bluestein, H.B., M.M. French, R. Tanamachi, S. Frasier, K. Hardwick, F. Junyent, A.L. Pazmany, 2007: Close-Range Observations of Tornadoes in Supercells Made with a Dual-Polarization, X-Band, Mobile Doppler Radar. *Mon. Wea. Rev.*, **135**, 1522-1541.

Rasmussen, E.N., J.M. Straka, 2007: Evolution of Low-Level Angular Momentum in the 2 June 1995 Dimmitt, Texas, Tornado Cyclone. *J. Atmos. Sci.*, **64**, 1365-1378.

Wurman, J., Y. Richardson, C. Alexander, S. Weygandt, P.F. Zhang, 2007: Dual-Doppler and Single-Doppler Analysis of a Tornadoic Storm Undergoing Reformation and Repeated Tornadoogenesis. *Mon. Wea. Rev.*, **135**, 736-758.

Markowski, P., Y. Richardson, 2007: Observations of Vertical Wind Shear Heterogeneity in Convective Boundary Layers. *Mon. Wea. Rev.*, **135**, 843-861.

Wurman, J., P. Robinson, C. Alexander, Y. Richardson, 2007: Low-Level Winds in Tornadoes and Potential Catastrophic Tornado Impacts in Urban Areas. *Bull. of the Amer. Meteor. Soc.*, **88**, 31-46.

Stonitsch, J.R., P. Markowski, P.M. 2007: Unusually Long Duration, Multiple-Doppler Radar Observations of a Front in a Convective Boundary Layer. *Mon. Wea. Rev.*, **135**, 93-117.

Grych, M.L., B.D. Lee, C.A. Finley, 2007: Thermodynamic Analysis of Supercell Rear-Flank Downdrafts from Project ANSWERS. *Mon. Wea. Rev.*, **135**, 240-246.

Beck, J.R., J.L. Schroeder, J. Wurman, 2006: High-Resolution Dual-Doppler Analyses of the 29 May 2001 Kress, Texas, Cyclic Supercell. *Mon. Wea. Rev.*, **134**, 3155-3168.

Tanamachi, R.J., H.B. Bluestein, S.S. Moore, R.P. Maddox, 2006: Infrared Thermal Imagery of Cloud Base in Tornadoic Supercells. *J. Atmos. Oceanic Technol.*, **23**, 1445-1461.

Schultz, D.M. et al., 2006: The Mysteries of Mammatus Clouds: Observations and Formation Mechanisms. *J. Atmos. Sci.*, **63**, 2409-2435.

Markowski, P., C. Hannon, 2006: Multiple-Doppler Radar Observations of the Evolution of Vorticity Extrema in a Convective Boundary Layer. *Mon. Wea. Rev.*, **134**, 355-374.

Arnott, N.R., Y.P. Richardson, J. Wurman, E.M. Rasmussen, 2006: Relationship between a Weakening Cold Front, Mesocyclones, and Cloud Development on 10 June 2002 during IHOP. *Mon. Wea. Rev.*, **134**, 311-335.

Haidin, K., K. Knupp, 2006: Mobile Integrated Profiler System (MIPS) Observations of Low-Level Convergent Boundaries during IHOP. *Mon. Wea. Rev.*, **134**, 92-112.

Colle, B.A., J.B. Wolfe, J. Stenburgh, D.E. Kingsmill, J.A.W. Cox, J.C. Shafer, 2005: High-Resolution Simulations and Microphysical Validation of an Orographic Precipitation Event over the Wasatch Mountains during IPEX 0P3. *Mon. Wea. Rev.*, **133**, 2947-2971.

Lee, W.-C., J. Wurman, 2005: Diagnosed Three-Dimensional Axisymmetric Structure of the Mullah Tornado on 3 May 1999. *J. Atmos. Oceanic Technol.*, **22**, 2373-2393.

Dowell, D.C., C. Alexander, J.M. Wurman, L.J. Wicker, 2005: Centrifuging of Hydrometeors and Debris in Tornadoes: Radar-Radiation Patterns and Wind-Measurement Errors. *Mon. Wea. Rev.*, **133**, 1501-1524.

Martin, W.J., A. Shapiro, 2005: Impact of Radar Tail and Ground Clutter on Wind Measurements in Clear Air. *J. Atmos. Oceanic Technol.*, **22**, 649-663.

Cox, J.A.W., J. Stenburgh, D.E. Kingsmill, J.C. Shafer, B.A. Colle, O. Bouquet, B.F. Smull, H. Cal, 2005: The Kinematic Structure of a Wasatch Mountain Winter Storm during IPEX 0P3. *Mon. Wea. Rev.*, **133**, 521-542.

Alexander, C.R., J. Wurman, 2005: The 30 May 1998 Spencer, South Dakota, Storm. Part I: The Structural Evolution and Environment of the Tornadoes. *Mon. Wea. Rev.*, **133**, 72-97.

Wurman, J., C.R. Alexander, 2005: The 30 May 1998 Spencer, South Dakota, Storm. Part II: Comparison of Observed Damage by Radar-Derived Winds in the Tornadoes. *Mon. Wea. Rev.*, **133**, 97-119.

Bluestein, H.B., C.C. Weiss, A.L. Pazmany, 2003: Mobile Doppler Radar Observations of a Tornado in a Supercell near Bassett, Nebraska, on 5 June 1999. Part I: Tornadoogenesis. *Mon. Wea. Rev.*, **131**, 2954-2967.

Steiner, M., O. Bouquet, R.A. Houze Jr., B.F. Smull, M. Mancini, 2003: Airflow within major Alpine river valleys under heavy rainfall. *Q. J. Roy. Meteor. Soc.*, **129**, 411-431.

Markowski, P., J.M. Straka, E.N. Rasmussen, 2002: Direct Surface Thermodynamic Observations within the Rear-Flank Downdrafts of Nonrotating and Tornadoic Supercells. *Mon. Wea. Rev.*, **130**, 1692-1721.

Burgess, D.W., M.A. Magis, J. Wurman, D.C. Dowell, Y. Richardson, 2002: Radar Observations of the 3 May 1999 Oklahoma City Tornado. *Wea. and Forecasting*, **17**, 456-471.

Wurman, J., 2002: The Multiple-Vortex Structure of a Tornado. *Wea. and Forecasting*, **17**, 473-505.

Spehner, D.A., C.A. Doswell III, G.J. Stumpf, 2002: The Tornadoes of 3 May 1999: Event Verification in Central Oklahoma and Related Issues. *Wea. and Forecasting*, **17**, 362-381.

Schultz, D.M. et al., 2002: Supplement to Understanding Utah Winter Storms: The Intermountain Precipitation Experiment (IPEX). *Mon. Wea. Rev.*, **130**, 215-216.

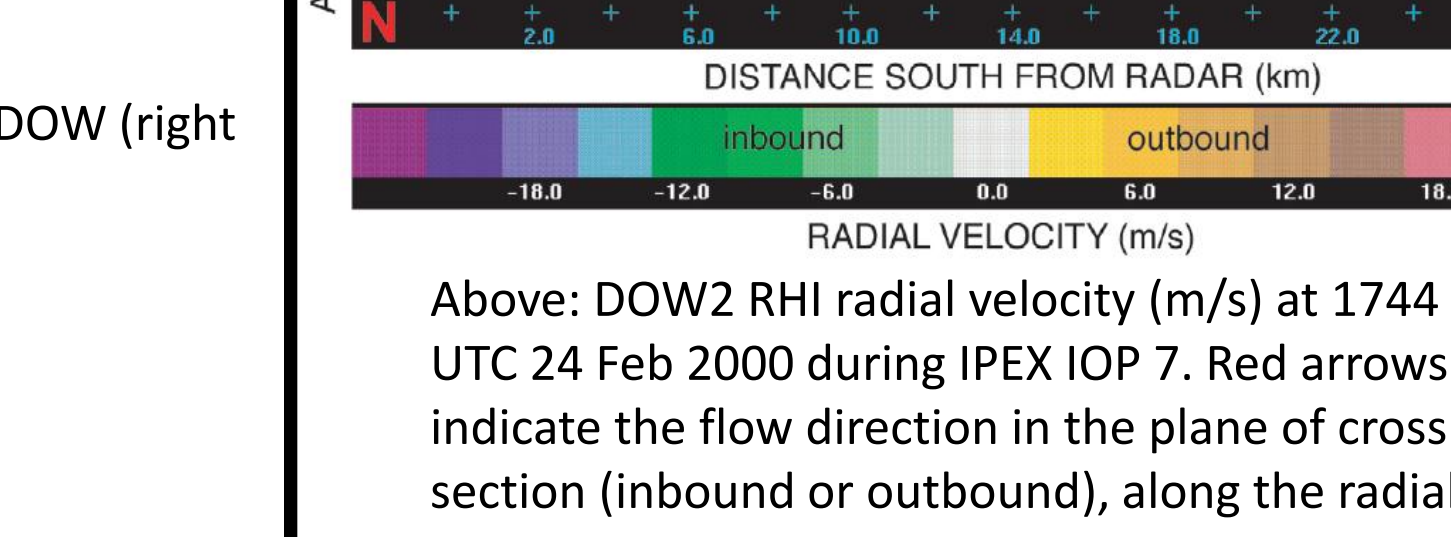
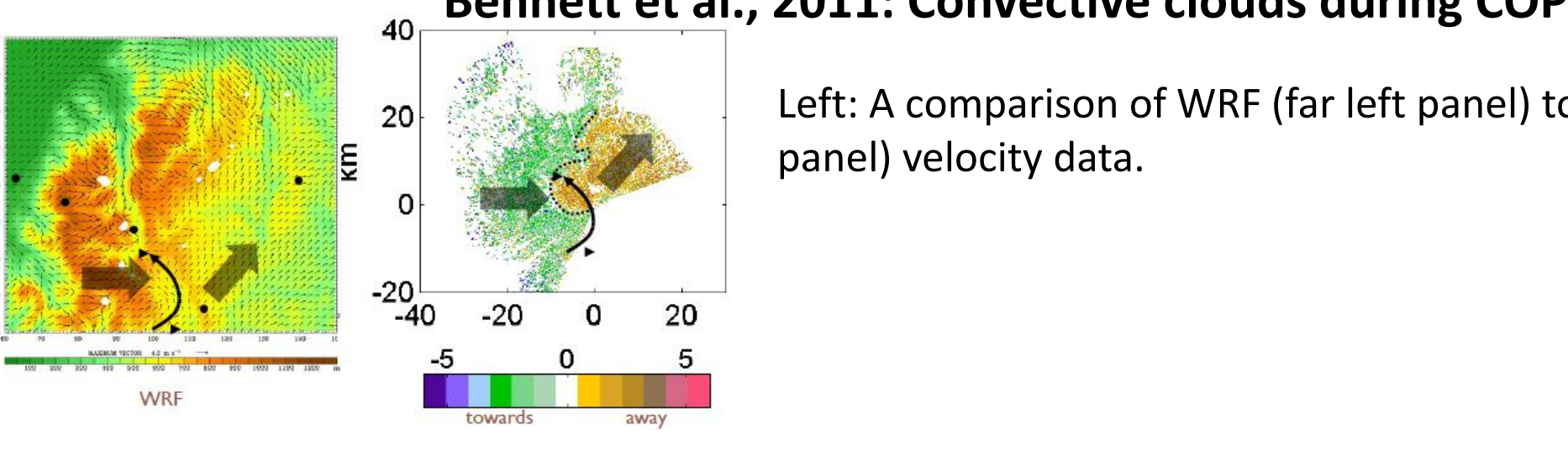
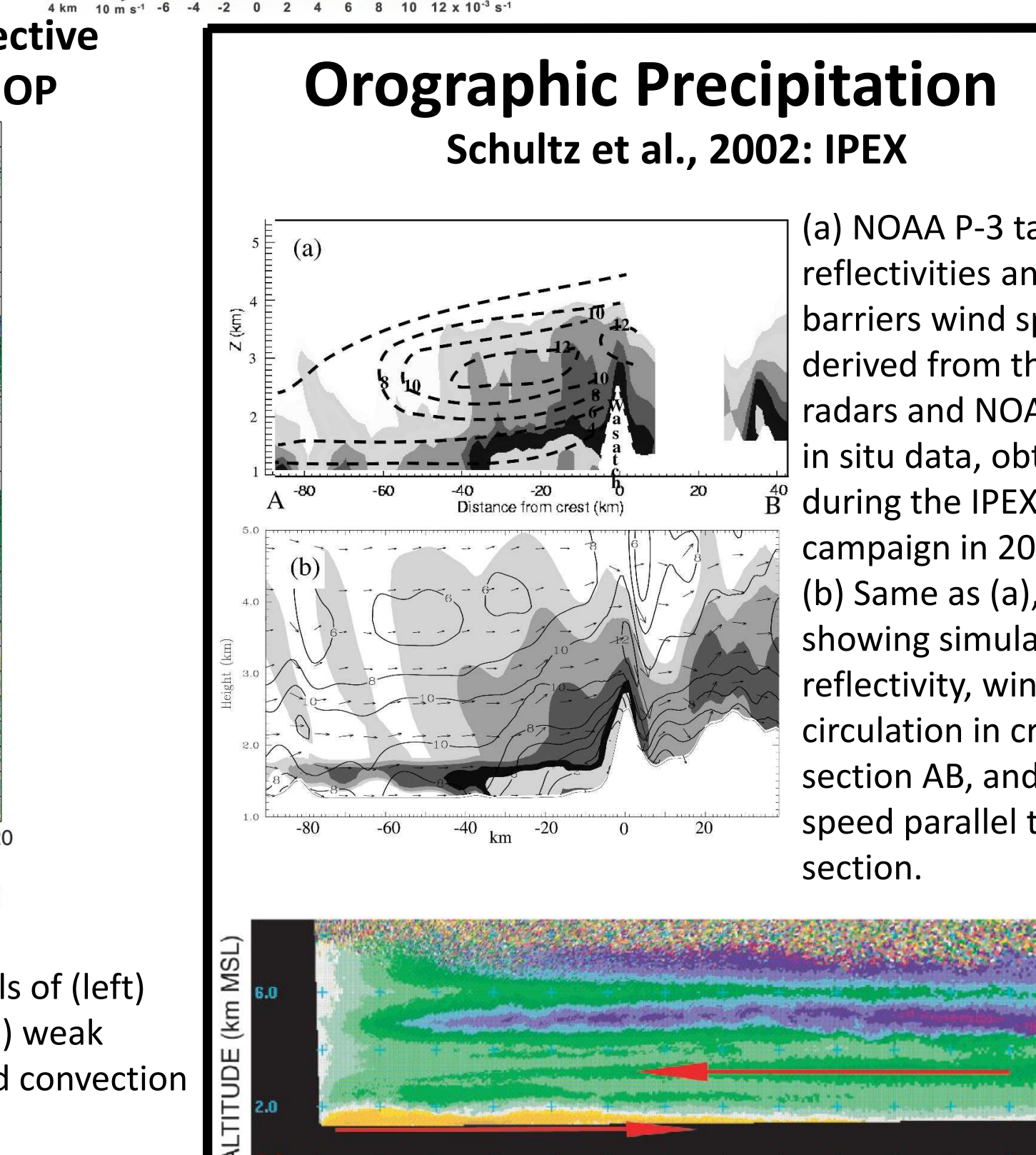
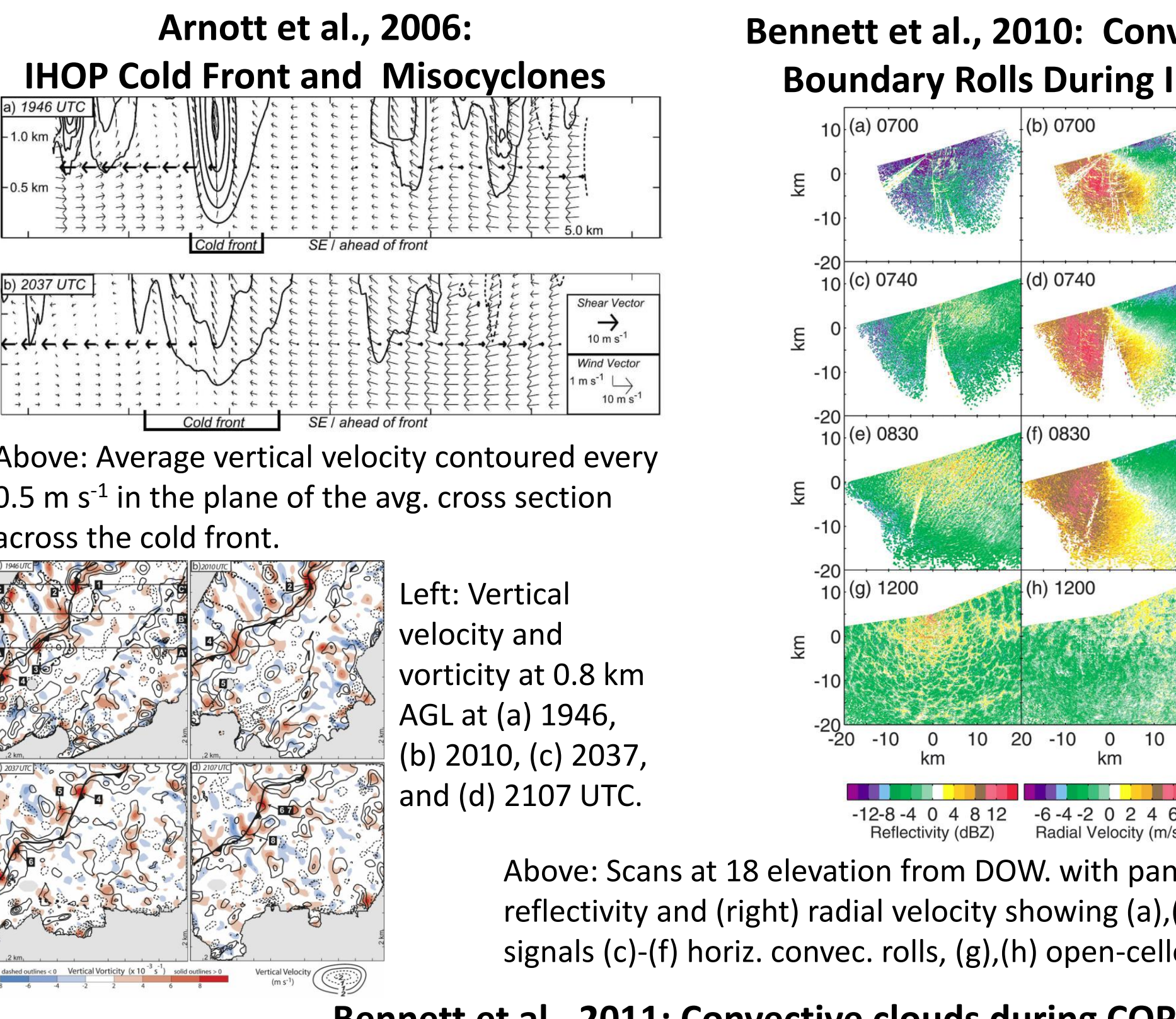
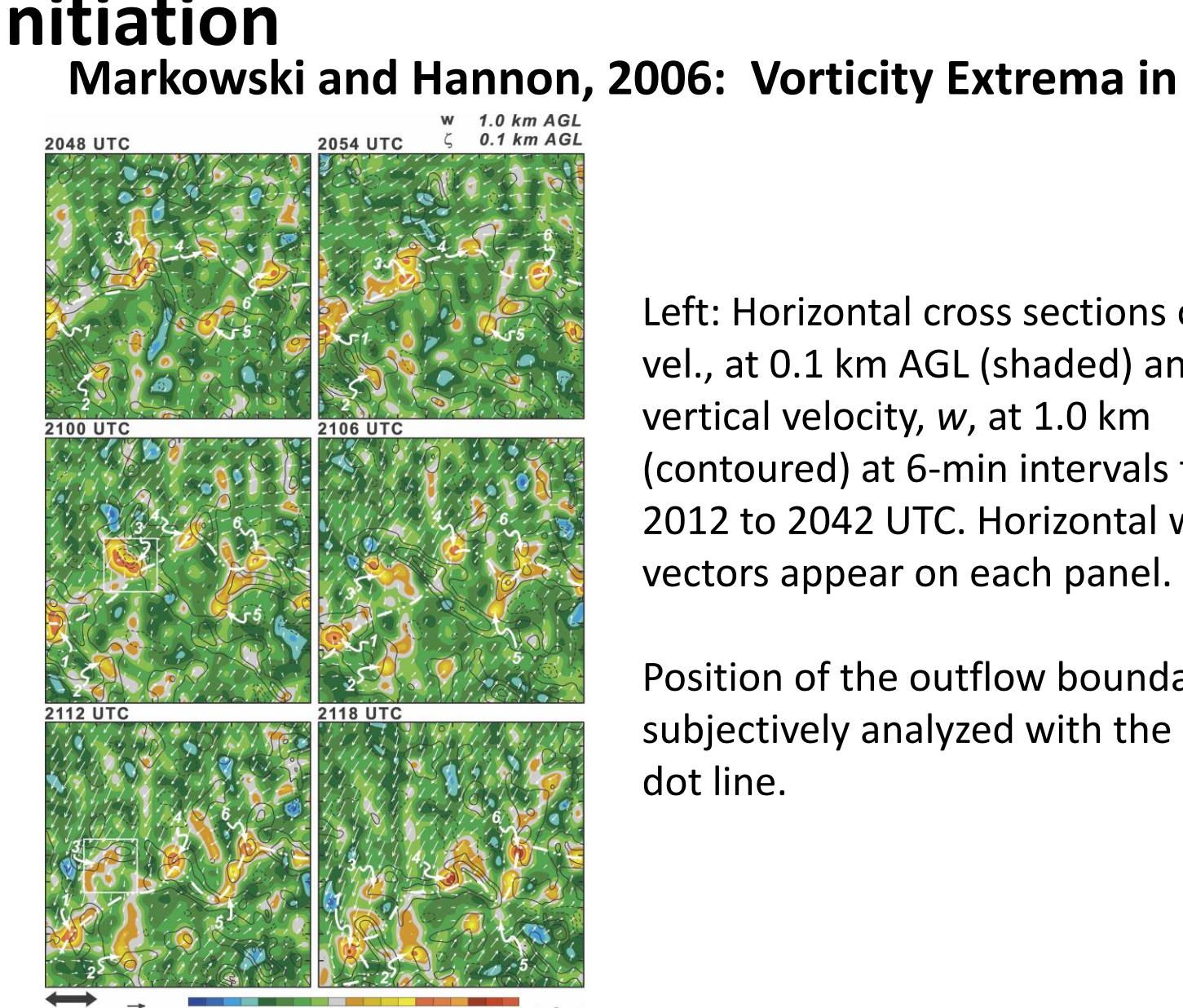
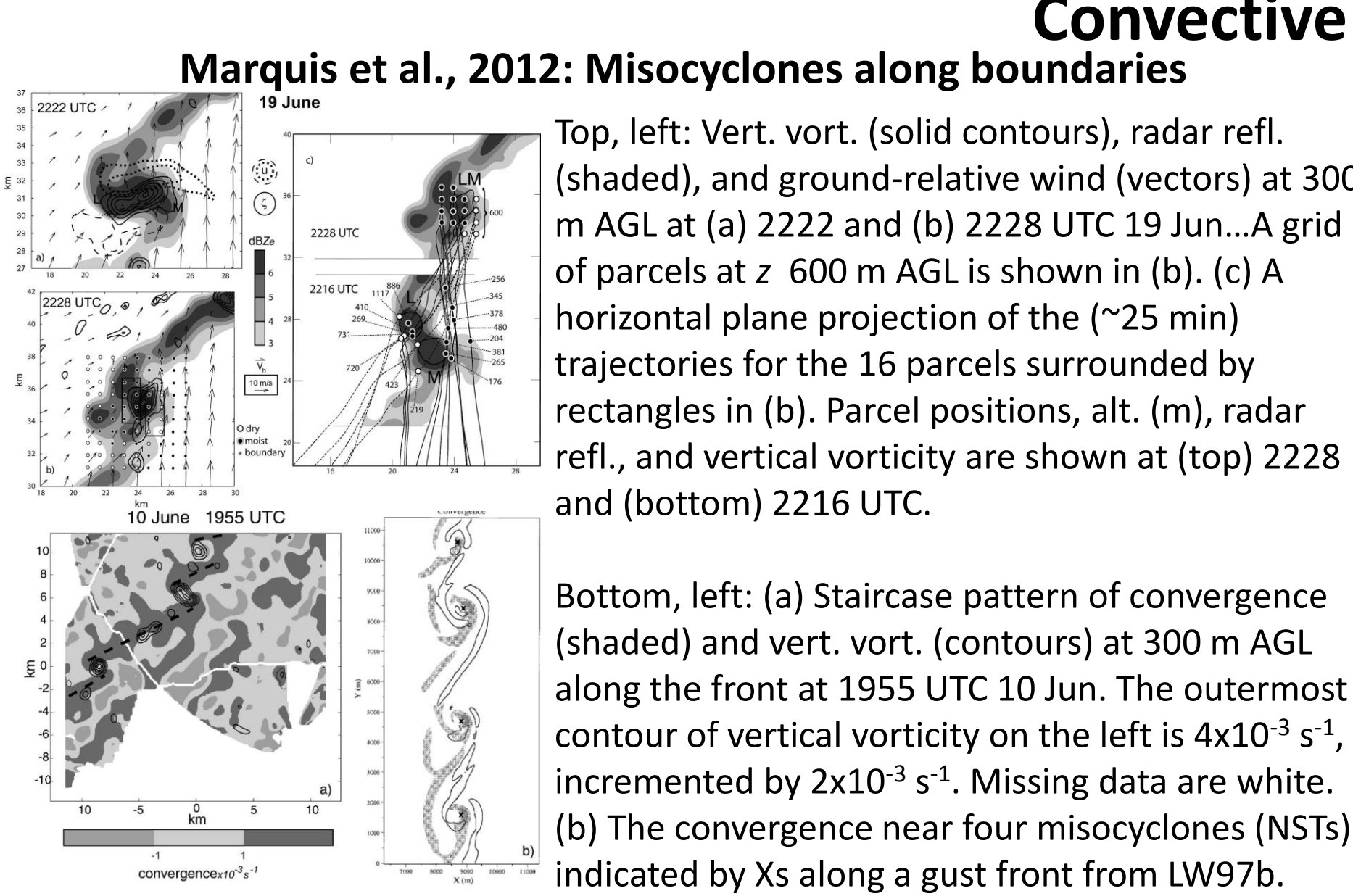
Schultz, D.M., et al., 2002: Understanding Utah Winter Storms: The Intermountain Precipitation Experiment. *Bull. Amer. Meteor. Soc.*, **83**, 1189-1210.

Pasch, R.J., L.A. Avila, J.L. Guiney, 2001: Atlantic Hurricane Season of 1998. *Mon. Wea. Rev.*, **129**, 3085-3123.

Wurman, J., G. Swarnedee, 2000: Finescale Radar Observations of the Dimmitt, Texas (2 June 1995), Tornado. *Mon. Wea. Rev.*, **128**, 2135-2164.

Weekworth, T.M., T.W. Horst, J.W. Wilson, 1999: An Observational Study of the Evolution of Horizontal Convective Rolls. *Mon. Wea. Rev.*, **127**, 2160-2179.

Wurman, J., J. Straka, E. Rasmussen, M. Randall, A. Zahra, 1997: Design and Deployment of a Portable, Pencil-Beam, Pulsed, 3-cm Doppler Radar. *J. Atmos. Oceanic Technol.*, **14**, 1502-1512.



### Graphographic Precipitation

