

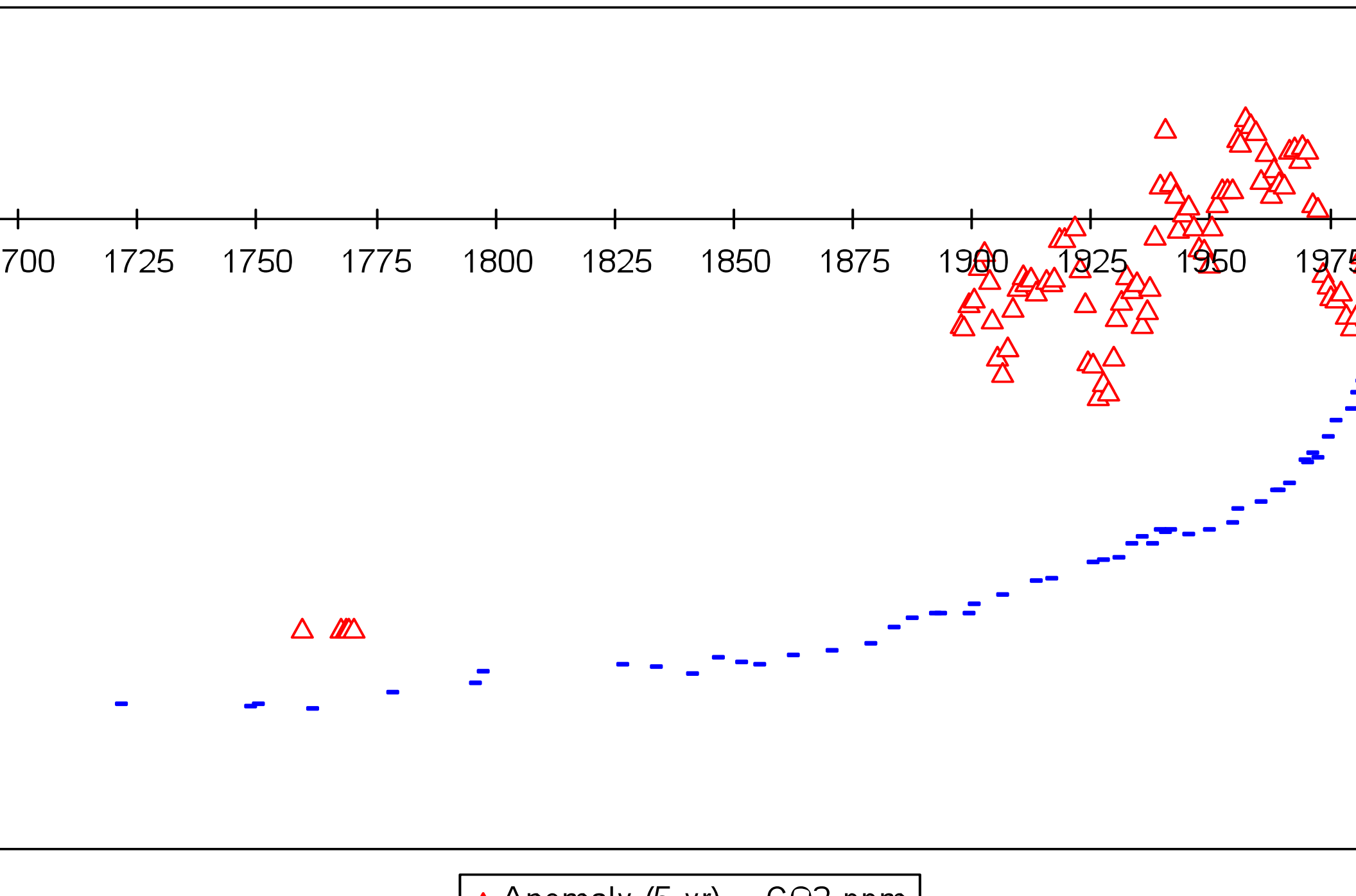
CRE – 3rd Annual Meeting

Baltimore - 11/5/2010

Initial User Needs Ideas

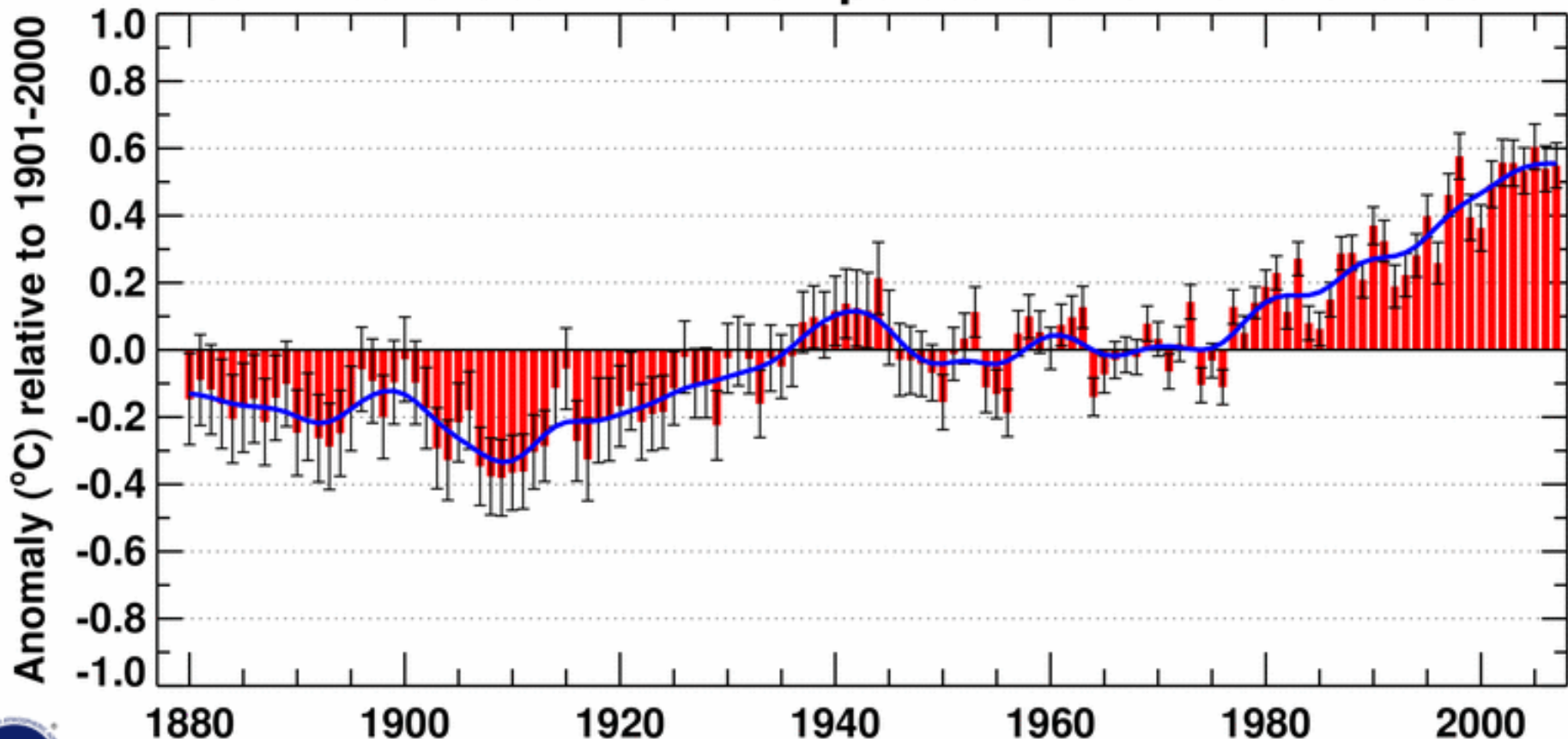
John Buchanan

Comparison of Temperature Anomalies to CO₂ Levels Pemberton/West Chester PA (Unhomogenized)

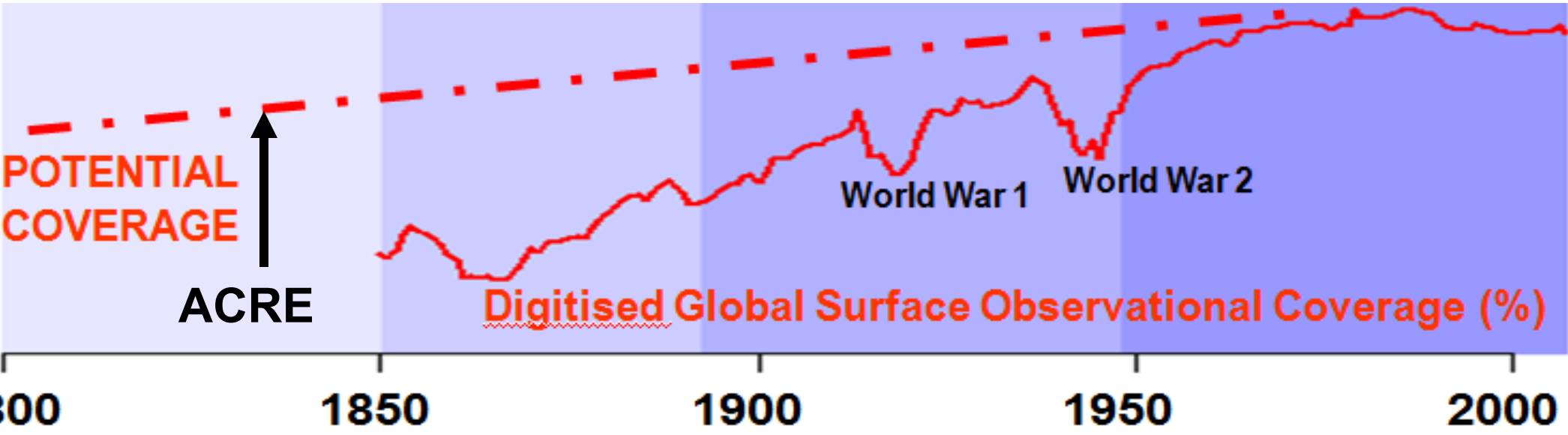


▲ Anomaly (F. yr) - - - CO₂ ppm

Jan-Dec Global Mean Temperature over Land & Ocean



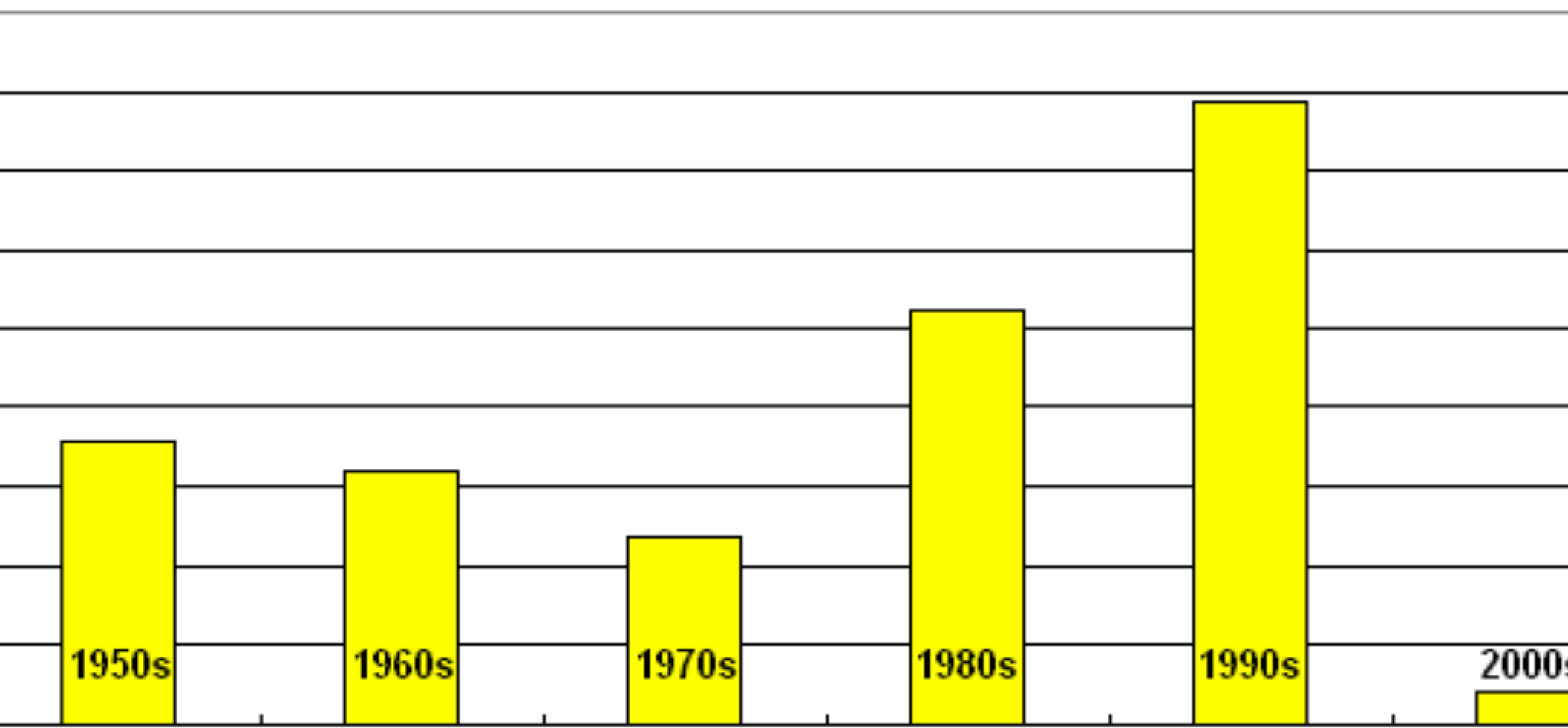
NCDC/NESDIS/NOAA



Why Did Correlation Drop?

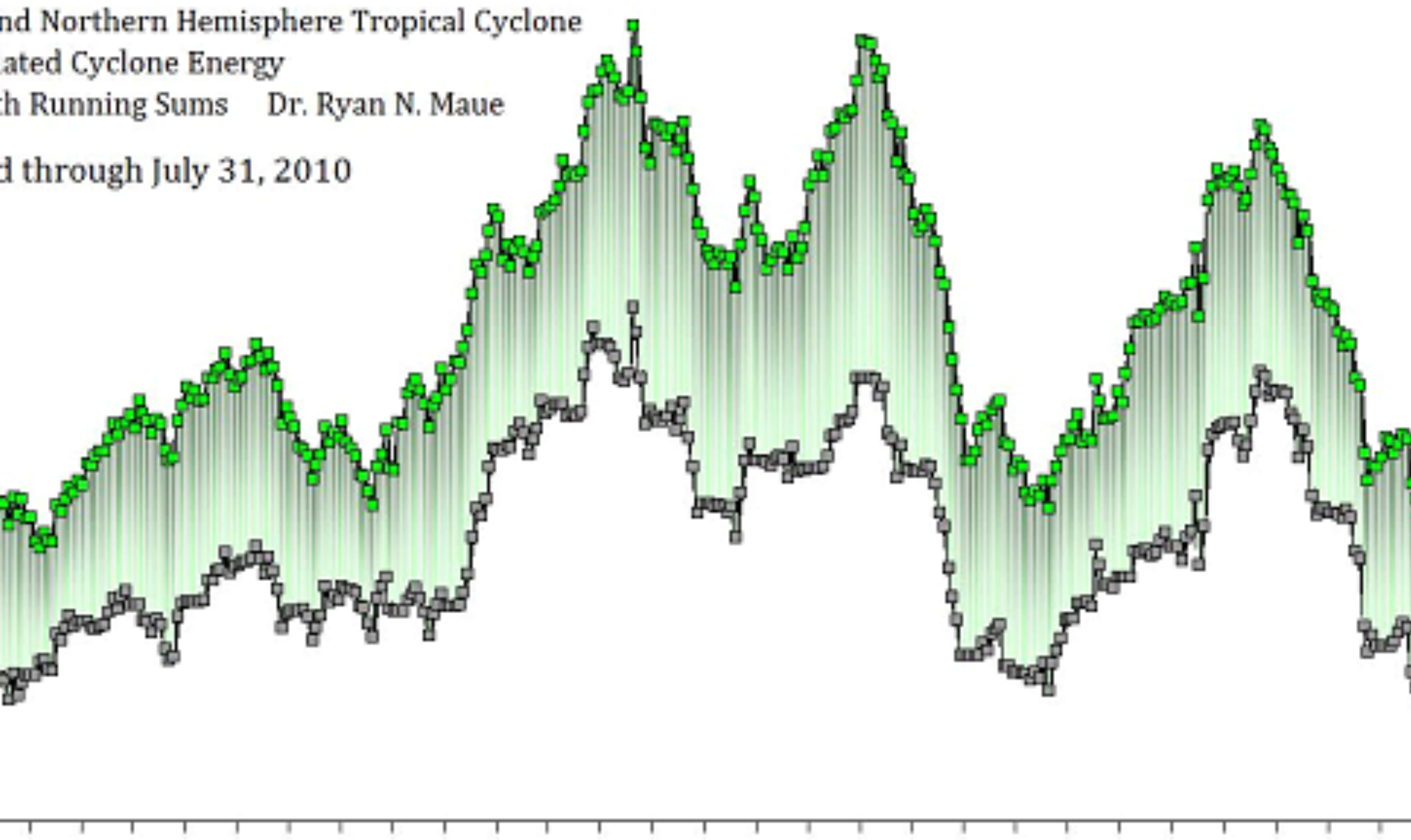
North Atlantic Basin vs. ENSO

ENSO /ACE Correlation



Global and NH ACE Drought

Global and Northern Hemisphere Tropical Cyclone
Accumulated Cyclone Energy
with Running Sums Dr. Ryan N. Maue
through July 31, 2010

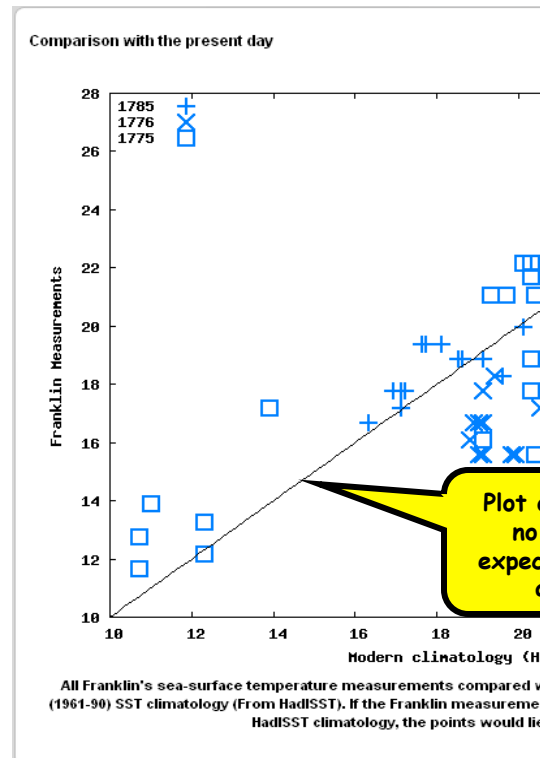
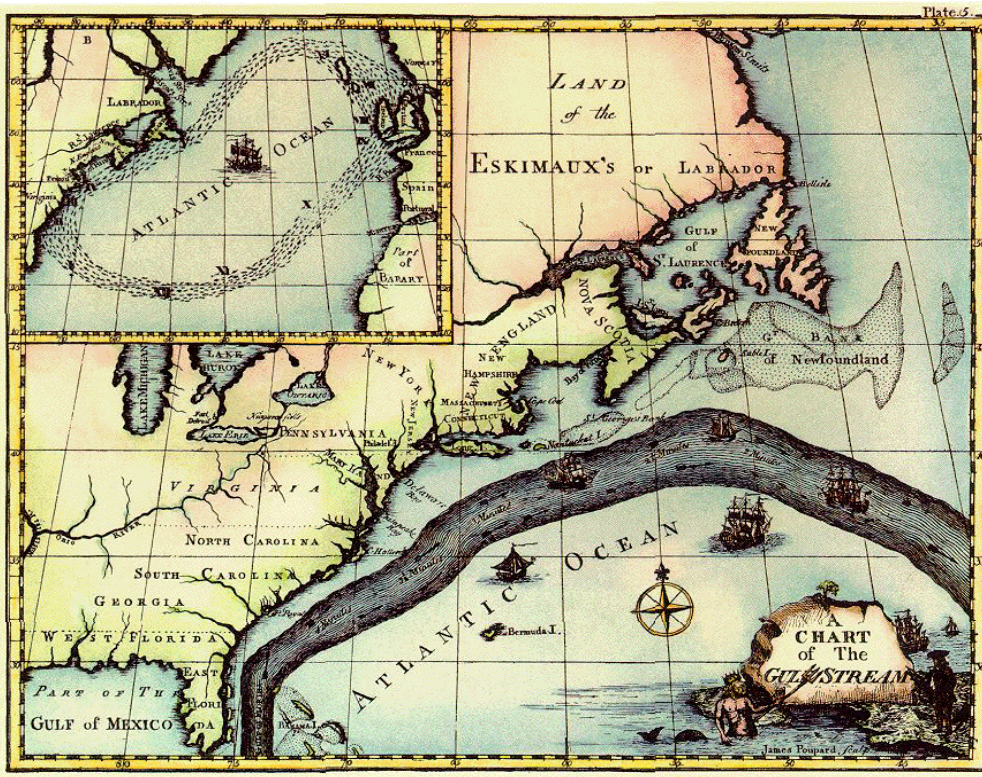


Sea Surface Temperature

water, &c. by Fahrenheit's thermometer; with
 al, Capt. Wycks, bound from Philadelphia to

326 MARITIME OBSERVATIONS.

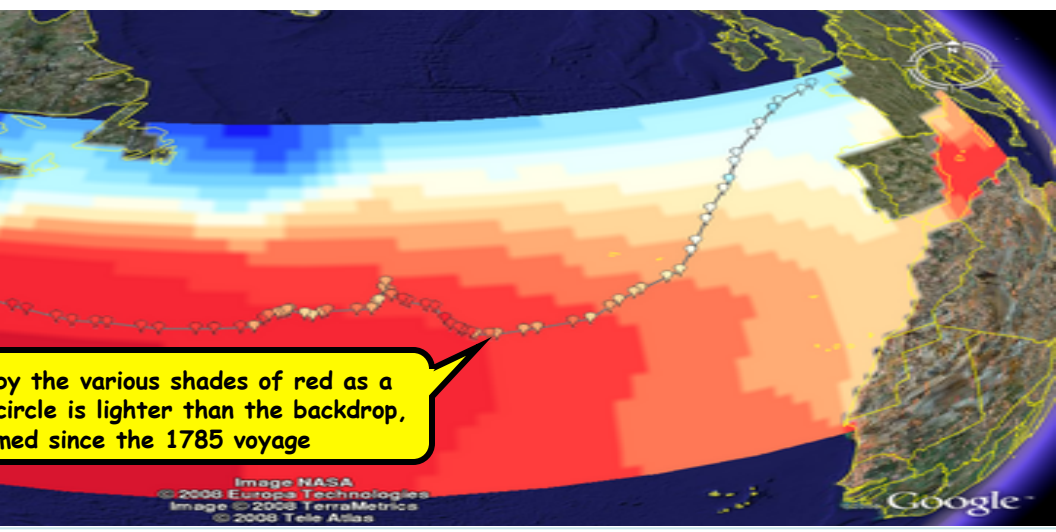
Distance.	Latit. N.	Long. W.	Remarks.
135	38 12	70 30	Left the capes Thursday night, October 29, 1776.
109	No ob.	68 12	
141	ditto.	65 23	Some sparks in the water these two last nights.
160	37 0	62 7	Ditto.
194	36 26	58 8	Ditto.
	35 21	55 3	Ditto.
75	35 33	53 54	
108	36 6	52 46	
175	38 2	50 1	
175	39 39	46 55	



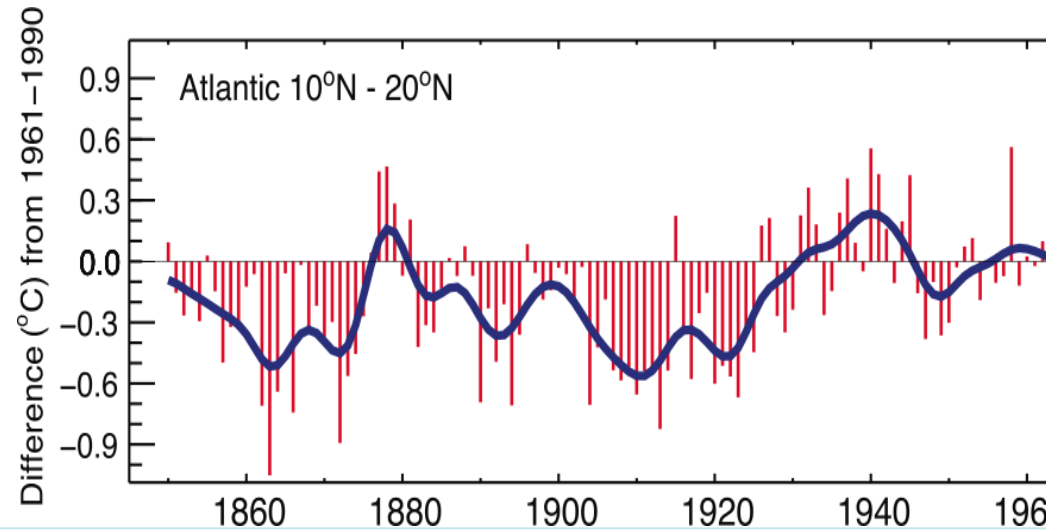
Temperature Readings (1776)

The Gulf Stream as Diagrammed by Franklin

Three Franklin Voyages Compared



Comparison of Sea Surface Temperatures (1785 to Current)



Sea Surface Temperatures have Increased; However M

A Climate Record of the Earth